

For Research Use Only

Ezrin Recombinant antibody, PBS Only (Capture)

Catalog Number: 85790-3-PBS



Basic Information

Catalog Number: 85790-3-PBS	GenBank Accession Number: BC013903	Purification Method: Protein A purification
Size: 100ug , Concentration: 1 mg/ml by Nanodrop;	GeneID (NCBI): 7430	CloneNo.: 250065E11
Source: Rabbit	ENSEMBL Gene ID: ENSG00000092820	
Isotype: IgG	UNIPROT ID: P15311	
Immunogen Catalog Number: AG23530	Full Name: ezrin	
	Calculated MW: 69 kDa	

Applications

Tested Applications:
Cytometric bead array, Sandwich ELISA, Indirect ELISA, Sample test

Species Specificity:
human

Product Information

85790-3-PBS targets Ezrin as part of a matched antibody pair.

MP02097-2: 85790-3-PBS capture and 85790-2-PBS detection (validated in Cytometric bead array, Sandwich ELISA)

Unconjugated rabbit recombinant monoclonal antibody in PBS only (BSA and azide free) storage buffer at a concentration of 1 mg/mL, ready for conjugation. Created using Proteintech's proprietary in-house recombinant technology. Recombinant production enables unrivalled batch-to-batch consistency, easy scale-up, and future security of supply.

This conjugation ready format makes antibodies ideal for use in many applications including: ELISAs, multiplex assays requiring matched pairs, mass cytometry, and multiplex imaging applications. Antibody use should be optimized by the end user for each application and assay.

Storage

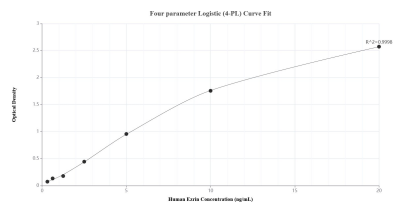
Storage:
Store at -80°C.

Storage Buffer:
PBS only, pH7.3

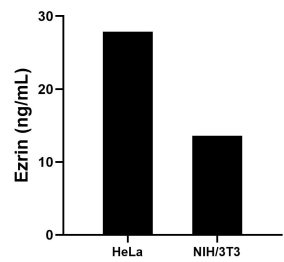
For technical support and original validation data for this product please contact:
T: 1 (888) 4PTGLAB (1-888-478-4522) (toll free in USA), or 1(312) 455-8498 (outside USA)
E: proteintech@ptglab.com
W: ptglab.com

This product is exclusively available under Proteintech Group brand and is not available to purchase from any other manufacturer.

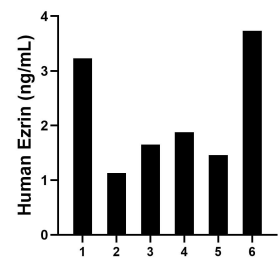
Selected Validation Data



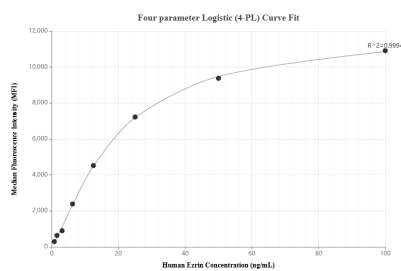
Sandwich ELISA standard curve of MP02097-2, Human Ezrin Recombinant Matched Antibody Pair - PBS only. 85790-3-PBS was coated to a plate as the capture antibody and incubated with serial dilutions of standard Ag23530. 85790-2-PBS was HRP conjugated as the detection antibody. Range: 0.313-20 ng/mL.



The mean Ezrin concentration was determined to be 27.86 ng/mL in HeLa cell extract based on a 1.50 mg/mL extract load and 13.61 ng/mL in NIH/3T3 cell extract based on a 1.50 mg/mL extract load.



Serum of six individual healthy human donors was measured. The Ezrin concentration of detected samples was determined to be 2.18 ng/mL with a range of 1.13-3.73 ng/mL.



Cytometric bead array standard curve of MP02097-2, Ezrin Recombinant Matched Antibody Pair, PBS Only. Capture antibody: 85790-3-PBS. Detection antibody: 85790-2-PBS. Standard: Ag23530. Range: 0.781-100 ng/mL.