

For Research Use Only

SPR Recombinant antibody, PBS Only (Capture)

Catalog Number: 85796-3-PBS



Basic Information

Catalog Number: 85796-3-PBS	GenBank Accession Number: BC017310	Purification Method: Protein A purification
Size: 100ug , Concentration: 1 mg/ml by Nanodrop;	GeneID (NCBI): 6697	CloneNo.: 243138C1
Source: Rabbit	UNIPROT ID: P35270	
Isotype: IgG	Full Name: sepiapterin reductase (7,8-dihydrobiopterin:NADP+ oxidoreductase)	
Immunogen Catalog Number: AG10395	Calculated MW: 261 aa, 28 kDa	

Applications

Tested Applications:
Cytometric bead array, Sandwich ELISA, Indirect ELISA, Sample test

Species Specificity:
human

Product Information

85796-3-PBS targets SPR as part of a matched antibody pair:

MP02100-1: 85796-3-PBS capture and 85796-1-PBS detection (validated in Cytometric bead array)

MP02100-2: 85796-3-PBS capture and 85796-2-PBS detection (validated in Cytometric bead array, Sandwich ELISA)

Unconjugated rabbit recombinant monoclonal antibody in PBS only (BSA and azide free) storage buffer at a concentration of 1 mg/mL, ready for conjugation. Created using Proteintech's proprietary in-house recombinant technology. Recombinant production enables unrivalled batch-to-batch consistency, easy scale-up, and future security of supply.

This conjugation ready format makes antibodies ideal for use in many applications including: ELISAs, multiplex assays requiring matched pairs, mass cytometry, and multiplex imaging applications. Antibody use should be optimized by the end user for each application and assay.

Storage

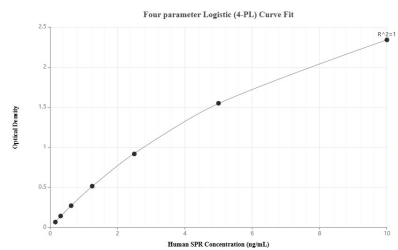
Storage:
Store at -80°C.

Storage Buffer:
PBS Only

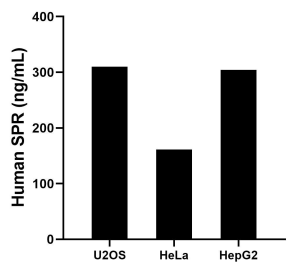
For technical support and original validation data for this product please contact:
T: 1 (888) 4PTGLAB (1-888-478-4522) (toll free in USA), or 1(312) 455-8498 (outside USA)
E: proteintech@ptglab.com
W: ptglab.com

This product is exclusively available under Proteintech Group brand and is not available to purchase from any other manufacturer.

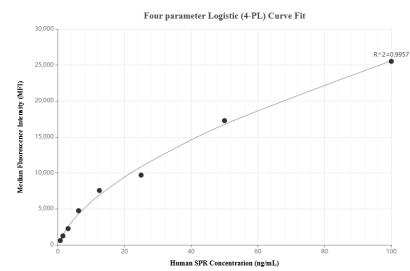
Selected Validation Data



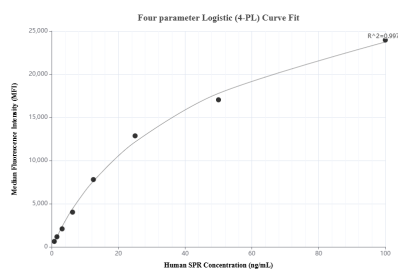
Sandwich ELISA standard curve of MP02100-2, Human SPR Recombinant Matched Antibody Pair - PBS only. 85796-3-PBS was coated to a plate as the capture antibody and incubated with serial dilutions of standard Ag10395. 85796-2-PBS was HRP conjugated as the detection antibody. Range: 0.156-10 ng/mL



The mean SPR concentration was determined to be 309.85 ng/mL in U2OS cell extract based on a 1.4 mg/mL extract load, 161.50 ng/mL in HeLa cell extract based on a 1.8 mg/mL extract load and 304.52 ng/mL in HepG2 cell extract based on a 1.8 mg/mL extract load.



Cytometric bead array standard curve of MP02100-2, SPR Recombinant Matched Antibody Pair, PBS Only. Capture antibody: 85796-3-PBS. Detection antibody: 85796-2-PBS. Standard: Ag10395. Range: 0.781-100 ng/mL



Cytometric bead array standard curve of MP02100-1, SPR Recombinant Matched Antibody Pair, PBS Only. Capture antibody: 85796-3-PBS. Detection antibody: 85796-1-PBS. Standard: Ag10395. Range: 0.781-100 ng/mL