

For Research Use Only

BCKDHA Recombinant antibody, PBS Only (Capture/Detector)

Catalog Number: 85799-1-PBS



Basic Information

Catalog Number: 85799-1-PBS	GenBank Accession Number: BC008933	Purification Method: Protein A purification
Size: 100ug , Concentration: 1 mg/ml by Nanodrop;	GeneID (NCBI): 593	CloneNo.: 250051H2
Source: Rabbit	UNIPROT ID: P12694	
Isotype: IgG	Full Name: branched chain keto acid dehydrogenase E1, alpha polypeptide	
Immunogen Catalog Number: AG32613	Calculated MW: 50 kDa	

Applications

Tested Applications:
Cytometric bead array, Sandwich ELISA, Indirect ELISA, Sample test

Species Specificity:
human

Product Information

85799-1-PBS targets BCKDHA as part of a matched antibody pair:

MP02125-2: 85799-3-PBS capture and 85799-1-PBS detection (validated in Cytometric bead array)

MP02125-3: 85799-1-PBS capture and 85799-2-PBS detection (validated in Sandwich ELISA)

Unconjugated rabbit recombinant monoclonal antibody in PBS only (BSA and azide free) storage buffer at a concentration of 1 mg/mL, ready for conjugation. Created using Proteintech's proprietary in-house recombinant technology. Recombinant production enables unrivalled batch-to-batch consistency, easy scale-up, and future security of supply.

This conjugation ready format makes antibodies ideal for use in many applications including: ELISAs, multiplex assays requiring matched pairs, mass cytometry, and multiplex imaging applications. Antibody use should be optimized by the end user for each application and assay.

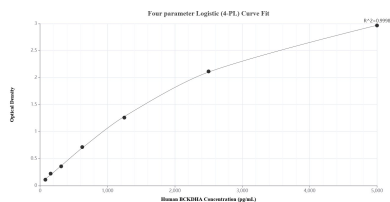
Storage

Storage:
Store at -80°C.
Storage Buffer:
PBS only, pH7.3

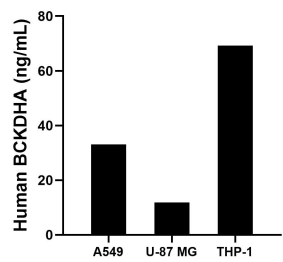
For technical support and original validation data for this product please contact:
T: 1 (888) 4PTGLAB (1-888-478-4522) (toll free in USA), or 1(312) 455-8498 (outside USA)
E: proteintech@ptglab.com
W: ptglab.com

This product is exclusively available under Proteintech Group brand and is not available to purchase from any other manufacturer.

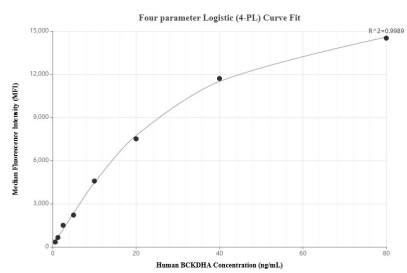
Selected Validation Data



Sandwich ELISA standard curve of MP02125-3, Human BCKDHA Recombinant Matched Antibody Pair - PBS only. 85799-1-PBS was coated to a plate as the capture antibody and incubated with serial dilutions of standard Ag32613. 85799-2-PBS was HRP conjugated as the detection antibody. Range: 78.1-5000 pg/mL



The mean BCKDHA concentration was determined to be 33.1 ng/mL in A549 cell extract based on a 1.3 mg/mL extract load, 11.9 ng/mL in U-87 MG cell extract based on a 2.0 mg/mL extract load and 69.3 ng/mL in THP-1 cell extract based on a 1.5 mg/mL extract load.



Cytometric bead array standard curve of MP02125-2, BCKDHA Recombinant Matched Antibody Pair, PBS Only. Capture antibody: 85799-3-PBS. Detection antibody: 85799-1-PBS. Standard: Ag32613. Range: 0.625-80 ng/mL