

For Research Use Only

hCG Beta Recombinant antibody, PBS Only (Detector)

Catalog Number: 85800-5-PBS



Basic Information

Catalog Number:

85800-5-PBS

Size:

100ug, Concentration: 1 mg/ml by Nanodrop;

Source:

Rabbit

Isotype:

IgG

Immunogen Catalog Number:

EG3378

GenBank Accession Number:

GeneID (NCBI):

1082

UNIPROT ID:

P0DN86(CGB)+P01215(CGA)

Full Name:

CG beta

Purification Method:

Protein A purification

CloneNo.:

250118G2

Applications

Tested Applications:

Sandwich ELISA, Indirect ELISA, Sample test

Species Specificity:

human

Product Information

85800-5-PBS targets hCG Beta as part of a matched antibody pair:

MP02128-3: 85800-6-PBS capture and 85800-5-PBS detection (validated in Sandwich ELISA)

Unconjugated rabbit recombinant monoclonal antibody in PBS only (BSA and azide free) storage buffer at a concentration of 1 mg/mL, ready for conjugation. Created using Proteintech's proprietary in-house recombinant technology. Recombinant production enables unrivalled batch-to-batch consistency, easy scale-up, and future security of supply.

This conjugation ready format makes antibodies ideal for use in many applications including: ELISAs, multiplex assays requiring matched pairs, mass cytometry, and multiplex imaging applications. Antibody use should be optimized by the end user for each application and assay.

Storage

Storage:

Store at -80°C.

Storage Buffer:

PBS only, pH7.3

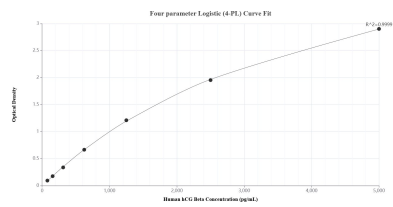
For technical support and original validation data for this product please contact:

T: 1 (888) 4PTGLAB (1-888-478-4522) (toll free in USA), or 1(312) 455-8498 (outside USA)

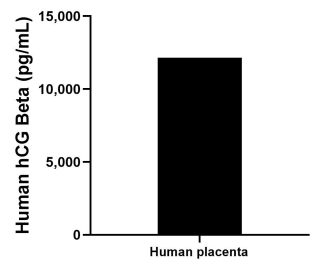
E: proteintech@ptglab.com
W: ptglab.com

This product is exclusively available under Proteintech Group brand and is not available to purchase from any other manufacturer.

Selected Validation Data



Sandwich ELISA standard curve of MP02128-3, Human hCG Beta Recombinant Matched Antibody Pair - PBS only. 85800-6-PBS was coated to a plate as the capture antibody and incubated with serial dilutions of standard Eg3378. 85800-5-PBS was HRP conjugated as the detection antibody. Range: 78.1-5000 pg/mL.



The mean hCG Beta concentration was determined to be 12,153.3 pg/mL in human placenta extract based on a 3.2 mg/mL extract load.