

For Research Use Only

# hCG Beta Recombinant antibody, PBS Only (Capture)

Catalog Number: 85800-6-PBS



## Basic Information

<b>Catalog Number:</b> 85800-6-PBS	<b>GenBank Accession Number:</b> GeneID (NCBI): 1082	<b>Purification Method:</b> Protein A purification
<b>Size:</b> 100ug , Concentration: 1 mg/ml by Nanodrop;	<b>UNIPROT ID:</b> P0DN86(CGB)+P01215(CGA)	<b>CloneNo.:</b> 250118H2
<b>Source:</b> Rabbit	<b>Full Name:</b> CG beta	
<b>Isotype:</b> IgG		
<b>Immunogen Catalog Number:</b> EG3378		

## Applications

**Tested Applications:**  
Indirect ELISA

**Species Specificity:**  
human

## Product Information

85800-6-PBS targets hCG Beta as part of a matched antibody pair:

MP02128-3: 85800-6-PBS capture and 85800-5-PBS detection (validated in Sandwich ELISA)

Unconjugated rabbit recombinant monoclonal antibody in PBS only (BSA and azide free) storage buffer at a concentration of 1 mg/mL, ready for conjugation. Created using Proteintech's proprietary in-house recombinant technology. Recombinant production enables unrivalled batch-to-batch consistency, easy scale-up, and future security of supply.

This conjugation ready format makes antibodies ideal for use in many applications including: ELISAs, multiplex assays requiring matched pairs, mass cytometry, and multiplex imaging applications. Antibody use should be optimized by the end user for each application and assay.

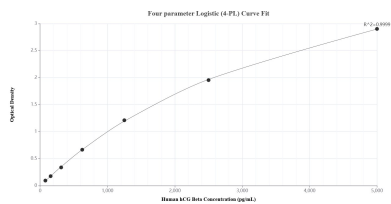
## Storage

**Storage:**  
Store at -80°C.  
**Storage Buffer:**  
PBS only, pH7.3

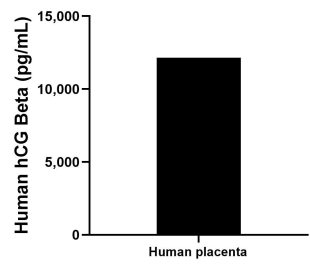
For technical support and original validation data for this product please contact:  
T: 1 (888) 4PTGLAB (1-888-478-4522) (toll free in USA), or 1(312) 455-8498 (outside USA)  
E: [proteintech@ptglab.com](mailto:proteintech@ptglab.com)  
W: [ptglab.com](http://ptglab.com)

This product is exclusively available under Proteintech Group brand and is not available to purchase from any other manufacturer.

## Selected Validation Data



Sandwich ELISA standard curve of MP02128-3, Human hCG Beta Recombinant Matched Antibody Pair - PBS only. 85800-6-PBS was coated to a plate as the capture antibody and incubated with serial dilutions of standard Eg3378. 85800-5-PBS was HRP conjugated as the detection antibody. Range: 78.1-5000 pg/mL.



The mean hCG Beta concentration was determined to be 12,153.3 pg/mL in human placenta extract based on a 3.2 mg/mL extract load.