

For Research Use Only

# hCG Beta Recombinant antibody, PBS Only

Catalog Number: 85800-7-PBS



## Basic Information

<b>Catalog Number:</b> 85800-7-PBS	<b>GenBank Accession Number:</b> GeneID (NCBI): 1082	<b>Purification Method:</b> Protein A purification
<b>Size:</b> 100ug, Concentration: 1 mg/ml by Nanodrop;	<b>UNIPROT ID:</b> PODN86	<b>CloneNo.:</b> 250118E6
<b>Source:</b> Rabbit	<b>Full Name:</b> CG beta	
<b>Isotype:</b> IgG	<b>Observed MW:</b> 20-25 kDa	
<b>Immunogen Catalog Number:</b> EG3378		

## Applications

**Tested Applications:**  
WB, IHC, Indirect ELISA

**Species Specificity:**  
human

## Background Information

Beta-hCG (beta-human chorionic gonadotropin) is a glycoprotein hormone produced by the placenta during pregnancy. It is a critical marker used in both obstetrics and oncology for various diagnostic and monitoring purposes. hCG is composed of two subunits: an alpha subunit (similar to other glycoprotein hormones like LH, FSH, and TSH) and a unique beta subunit (β-hCG). The beta subunit is the primary focus for diagnostic tests due to its specificity. β-hCG is initially secreted by the syncytiotrophoblast cells surrounding the developing embryo and later by the placenta.

## Storage

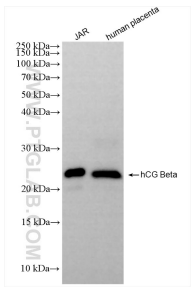
**Storage:**  
Store at -80°C.

**Storage Buffer:**  
PBS only, pH7.3

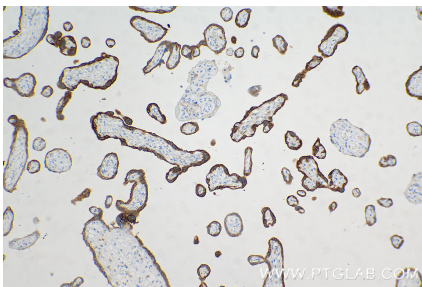
For technical support and original validation data for this product please contact:  
T: 1 (888) 4PTGLAB (1-888-478-4522) (toll free in USA), or 1(312) 455-8498 (outside USA)  
E: [proteintech@ptglab.com](mailto:proteintech@ptglab.com)  
W: [ptglab.com](http://ptglab.com)

This product is exclusively available under Proteintech Group brand and is not available to purchase from any other manufacturer.

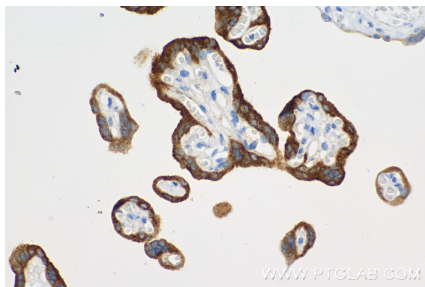
Selected Validation Data



Various lysates were subjected to SDS PAGE followed by western blot with 85800-7-RR (hCG Beta antibody) at dilution of 1:3000 incubated at room temperature for 1.5 hours. This data was developed using the same antibody clone with 85800-7-PBS in a different storage buffer formulation.



Immunohistochemical analysis of paraffin-embedded human placenta tissue slide using 85800-7-RR (hCG Beta antibody) at dilution of 1:1000 (under 10x lens). Heat mediated antigen retrieval with Tris-EDTA buffer (pH 9.0). This data was developed using the same antibody clone with 85800-7-PBS in a different storage buffer formulation.



Immunohistochemical analysis of paraffin-embedded human placenta tissue slide using 85800-7-RR (hCG Beta antibody) at dilution of 1:1000 (under 40x lens). Heat mediated antigen retrieval with Tris-EDTA buffer (pH 9.0). This data was developed using the same antibody clone with 85800-7-PBS in a different storage buffer formulation.