

For Research Use Only

# MEF2D Recombinant antibody, PBS Only

Catalog Number: 85801-5-PBS



## Basic Information

<b>Catalog Number:</b> 85801-5-PBS	<b>GenBank Accession Number:</b> BC040949	<b>Purification Method:</b> Protein A purification
<b>Size:</b> 100ug , Concentration: 1 mg/ml by Nanodrop;	<b>GeneID (NCBI):</b> 4209	<b>CloneNo.:</b> 250068B7
<b>Source:</b> Rabbit	<b>UNIPROT ID:</b> Q14814	
<b>Isotype:</b> IgG	<b>Full Name:</b> myocyte enhancer factor 2D	
<b>Immunogen Catalog Number:</b> AG5700	<b>Calculated MW:</b> 56 kDa	
	<b>Observed MW:</b> 55-60 kDa	

## Applications

**Tested Applications:**  
WB, IHC, IF/ICC, Indirect ELISA

**Species Specificity:**  
human, mouse, rat

## Background Information

MEF2D, also named as Myocyte-specific enhancer factor 2D, is a 521 amino acid protein, which belongs to the MEF2 family. MEF2D is expressed in t in myotubes and also in undifferentiated myoblasts. MEF2D as a transcriptional activator which binds specifically to the MEF2 element, found in numerous muscle-specific and stress-induced genes. MEF2D mediates cellular functions not only in skeletal and cardiac muscle development, but also in neuronal differentiation and survival. The calculated molecular weight of MEF2D is 55 kDa, but Phosphorylated MEF2D is 60 kDa.

## Storage

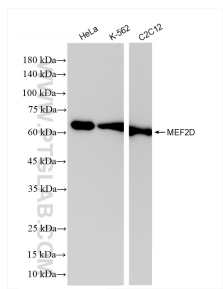
**Storage:**  
Store at -80°C.

**Storage Buffer:**  
PBS only, pH7.3

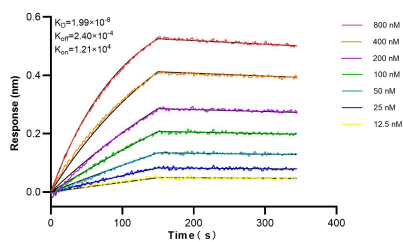
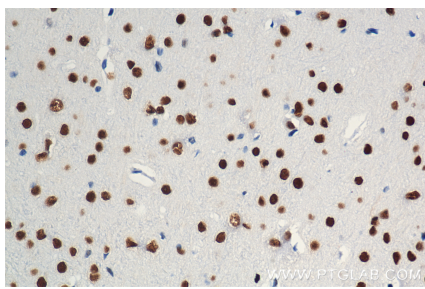
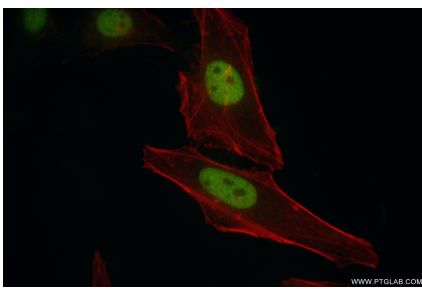
For technical support and original validation data for this product please contact:  
T: 1 (888) 4PTGLAB (1-888-478-4522) (toll free in USA), or 1(312) 455-8498 (outside USA)  
E: [proteintech@ptglab.com](mailto:proteintech@ptglab.com)  
W: [ptglab.com](http://ptglab.com)

This product is exclusively available under Proteintech Group brand and is not available to purchase from any other manufacturer.

## Selected Validation Data



Various lysates were subjected to SDS PAGE followed by western blot with 85801-5-RR (MEF2D antibody) at dilution of 1:10000 incubated at room temperature for 1.5 hours. This data was developed using the same antibody clone with 85801-5-PBS in a different storage buffer formulation.



Biolayer interferometry (BLI) kinetic assays of 85801-5-RR against Human MEF2D were performed. The affinity constant is 1.99 nM.