

For Research Use Only

# MEF2D Recombinant antibody

Catalog Number: 85801-5-RR



## Basic Information

<b>Catalog Number:</b> 85801-5-RR	<b>GenBank Accession Number:</b> BC040949	<b>Purification Method:</b> Protein A purification
<b>Size:</b> 100ul , Concentration: 1000 µg/ml by Nanodrop;	<b>GeneID (NCBI):</b> 4209	<b>CloneNo.:</b> 250068B7
<b>Source:</b> Rabbit	<b>UNIPROT ID:</b> Q14814	<b>Recommended Dilutions:</b> WB: 1:5000-1:50000 IHC: 1:400-1:1600 IF/ICC: 1:500-1:2000
<b>Isotype:</b> IgG	<b>Full Name:</b> myocyte enhancer factor 2D	
<b>Immunogen Catalog Number:</b> AG5700	<b>Calculated MW:</b> 56 kDa	
	<b>Observed MW:</b> 55-60 kDa	

## Applications

**Tested Applications:**  
WB, IHC, IF/ICC, ELISA

**Species Specificity:**  
human, mouse, rat

**Note-IHC: suggested antigen retrieval with TE buffer pH 9.0; (\*) Alternatively, antigen retrieval may be performed with citrate buffer pH 6.0**

**Positive Controls:**

**WB :** HeLa cells, THP-1 cells, K-562 cells, U2OS cells, C2C12 cells, C6 cells, U266 cells

**IHC :** mouse brain tissue,

**IF/ICC :** HeLa cells,

## Background Information

MEF2D, also named as Myocyte-specific enhancer factor 2D, is a 521 amino acid protein, which belongs to the MEF2 family. MEF2D is expressed in t in myotubes and also in undifferentiated myoblasts. MEF2D as a transcriptional activator which binds specifically to the MEF2 element, found in numerous muscle-specific and stress-induced genes. MEF2D mediates cellular functions not only in skeletal and cardiac muscle development, but also in neuronal differentiation and survival. The calculated molecular weight of MEF2D is 55 kDa, but Phosphorylated MEF2D is 60 kDa.

## Storage

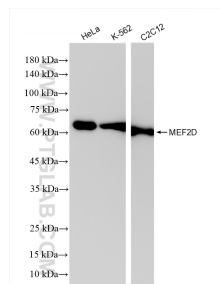
**Storage:**  
Store at -20°C. Stable for one year after shipment.  
**Storage Buffer:**  
PBS with 0.02% sodium azide and 50% glycerol, pH7.3  
**Aliquoting is unnecessary for -20°C storage**

\*\*\* 20ul sizes contain 0.1% BSA

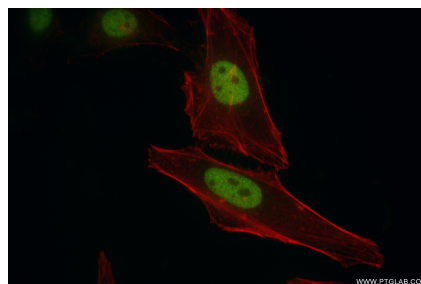
For technical support and original validation data for this product please contact:  
T: 1 (888) 4PTGLAB (1-888-478-4522) (toll free in USA), or 1(312) 455-8498 (outside USA)  
E: proteintech@ptglab.com  
W: ptglab.com

This product is exclusively available under Proteintech Group brand and is not available to purchase from any other manufacturer.

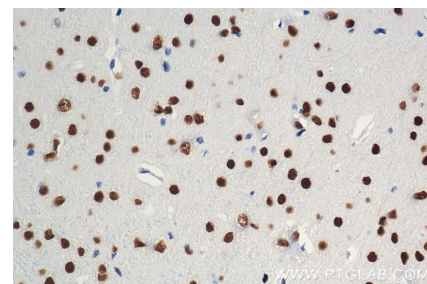
## Selected Validation Data



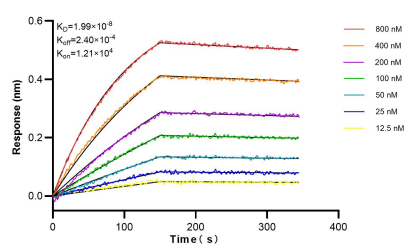
Various lysates were subjected to SDS PAGE followed by western blot with 85801-5-RR (MEF2D antibody) at dilution of 1:10000 incubated at room temperature for 1.5 hours.



Immunofluorescent analysis of (4% PFA) fixed HeLa cells using MEF2D antibody (85801-5-RR, Clone: 250068B7) at dilution of 1:1000 and CoraLite® 488-Conjugated Goat Anti-Rabbit IgG(H+L) (SA00013-2), CL594-Phalloidin (red).



Immunohistochemical analysis of paraffin-embedded mouse brain tissue slide using 85801-5-RR (MEF2D antibody) at dilution of 1:800 (under 40x lens). Heat mediated antigen retrieval with Tris-EDTA buffer (pH 9.0).



Biolayer interferometry (BLI) kinetic assays of 85801-5-RR against Human MEF2D were performed. The affinity constant is 1.99 nM.