

For Research Use Only

Serpin B3/4 Recombinant antibody, PBS Only

Catalog Number: 85807-2-PBS



Basic Information

Catalog Number: 85807-2-PBS	GenBank Accession Number: BC005224	Purification Method: Protein A purification
Size: 100ug , Concentration: 1 mg/ml by Nanodrop;	GeneID (NCBI): 6317	CloneNo.: 250057B3
Source: Rabbit	UNIPROT ID: P29508	
Isotype: IgG	Full Name: serpin peptidase inhibitor, clade B (ovalbumin), member 3	
Immunogen Catalog Number: AG24846	Calculated MW: 390 aa, 45 kDa	
	Observed MW: 45 kDa	

Applications

Tested Applications:
WB, Indirect ELISA

Species Specificity:
human

Background Information

Squamous cell carcinoma antigens 1 and 2 (SCCA1 and 2, SERPIN B3 and B4) are members of the ovalbumin family of serine proteinase inhibitors. SCCA1 and SCCA2 are highly homologous proteins, 91% identical at the amino acid level, and probably evolving from a common ancestor gene. The neutral form of SCCA (SCCA1, or SERPINB3) is detected in the cytoplasm of normal and some malignant squamous cells, whereas the acidic form (SCCA2, or SERPINB4) is expressed primarily in malignant cells and is the major form found in the plasma of cancer patients. SCCA2 (SERPINB4), along with SCCA1 (SERPINB3), can be processed into smaller fragments that aggregate to form an autoantigen in psoriasis, probably by causing chronic inflammation. This antibody can recognize both SerpinB3 and SerpinB4.

Storage

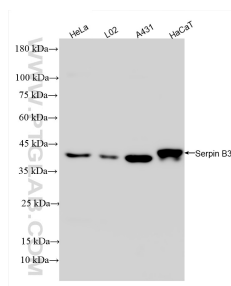
Storage:
Store at -80°C.

Storage Buffer:
PBS only, pH7.3

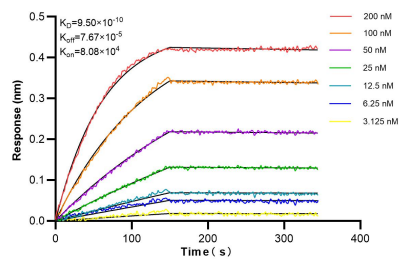
For technical support and original validation data for this product please contact:
T: 1 (888) 4PTGLAB (1-888-478-4522) (toll free in USA), or 1(312) 455-8498 (outside USA)
E: proteintech@ptglab.com
W: ptglab.com

This product is exclusively available under Proteintech Group brand and is not available to purchase from any other manufacturer.

Selected Validation Data



Various lysates were subjected to SDS PAGE followed by western blot with 85807-2-RR (SERPINB3 antibody) at dilution of 1:5000 incubated at room temperature for 1.5 hours. This data was developed using the same antibody clone with 85807-2-PBS in a different storage buffer formulation.



Biolayer interferometry (BLI) kinetic assays of 85807-2-RR against Human Serpin B3/4 were performed. The affinity constant is 0.95 nM.