

For Research Use Only

KLK14 Recombinant monoclonal antibody, PBS Only (Capture)

Catalog Number: 85809-2-PBS



Basic Information

Catalog Number: 85809-2-PBS	GenBank Accession Number: NM_022046.5	Purification Method: Protein A purification
Size: 100ug , Concentration: 1 mg/ml by Nanodrop;	GeneID (NCBI): 43847	CloneNo.: 243023D9
Source: Rabbit	UNIPROT ID: Q9P0G3	
Isotype: IgG	Full Name: kallikrein-related peptidase 14	
Immunogen Catalog Number: EG2472	Calculated MW: 29 kDa	

Applications

Tested Applications:
Sandwich ELISA, Indirect ELISA

Species Specificity:
human

Product Information

85809-2-PBS targets KLK14 as part of a matched antibody pair:

MP02991-1: 85809-2-PBS capture and 85809-1-PBS detection (validated in Sandwich ELISA)

Unconjugated rabbit recombinant monoclonal antibody in PBS only (BSA and azide free) storage buffer at a concentration of 1 mg/mL, ready for conjugation. Created using Proteintech's proprietary in-house recombinant technology. Recombinant production enables unrivalled batch-to-batch consistency, easy scale-up, and future security of supply.

This conjugation ready format makes antibodies ideal for use in many applications including: ELISAs, multiplex assays requiring matched pairs, mass cytometry, and multiplex imaging applications. Antibody use should be optimized by the end user for each application and assay.

Storage

Storage:
Store at -80°C.

Storage Buffer:
PBS only, pH7.3

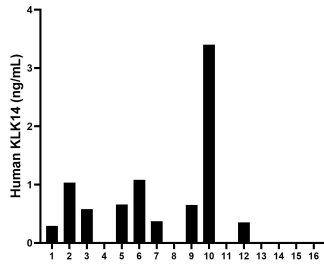
For technical support and original validation data for this product please contact:

T: 1 (888) 4PTGLAB (1-888-478-4522) (toll free in USA), or 1(312) 455-8498 (outside USA)

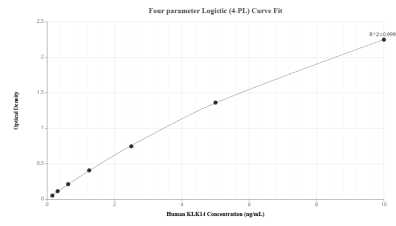
E: proteintech@ptglab.com
W: ptglab.com

This product is exclusively available under Proteintech Group brand and is not available to purchase from any other manufacturer.

Selected Validation Data



Plasma of sixteen individual healthy human donors was measured. The human KLK14 concentration of detected samples was determined to be 0.94 ng/mL with a range of ND - 3.40 ng/mL.



Sandwich ELISA standard curve of MP02991-1, Human KLK14 Recombinant Matched Antibody Pair - PBS only. 85809-2-PBS was coated to a plate as the capture antibody and incubated with serial dilutions of standard Eg2472. 85809-1-PBS was HRP conjugated as the detection antibody. Range: 0.156-10 ng/mL