

For Research Use Only

C4BPB Recombinant antibody, PBS Only

Catalog Number: 85812-4-PBS



Basic Information

Catalog Number: 85812-4-PBS	GenBank Accession Number: NM_000716.3	Purification Method: Protein A purification
Size: 100ug, Concentration: 1 mg/ml by Nanodrop;	GeneID (NCBI): 725	CloneNo.: 250135C10
Source: Rabbit	UNIPROT ID: P20851-1	
Isotype: IgG	Full Name: complement component 4 binding protein, beta	
Immunogen Catalog Number: EG2976	Calculated MW: 28 kDa	
	Observed MW: 45 kDa	

Applications

Tested Applications:
WB, Indirect ELISA
Species Specificity:
human

Background Information

C4b-binding protein (C4BP) is a large oligomeric glycoprotein, present in plasma at a concentration of approximately 200 mg/L (PMID: 24218259). It is the main inhibitor of the classical complement and lectin pathway. C4BP is composed of two polypeptides (alpha and beta chains), which have molecular weights of 70 and 45 kDa, respectively (PMID: 7561113).

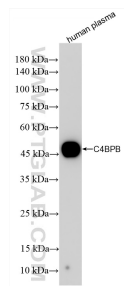
Storage

Storage:
Store at -80°C.
Storage Buffer:
PBS only, pH7.3

For technical support and original validation data for this product please contact:
T: 1 (888) 4PTGLAB (1-888-478-4522) (toll free in USA), or 1(312) 455-8498 (outside USA)
E: proteintech@ptglab.com
W: ptglab.com

This product is exclusively available under Proteintech Group brand and is not available to purchase from any other manufacturer.

Selected Validation Data



Human plasma sample was subjected to SDS PAGE followed by western blot with 85812-4-RR (C4BPB antibody) at dilution of 1:10000 incubated at room temperature for 1.5 hours. This data was developed using the same antibody clone with 85812-4-PBS in a different storage buffer formulation.