

For Research Use Only

# C4BPB Recombinant antibody

Catalog Number: 85812-4-RR



## Basic Information

<b>Catalog Number:</b> 85812-4-RR	<b>GenBank Accession Number:</b> NM_000716.3	<b>Purification Method:</b> Protein A purification
<b>Size:</b> 100ul , Concentration: 1000 µg/ml by Nanodrop;	<b>GeneID (NCBI):</b> 725	<b>CloneNo.:</b> 250135C10
<b>Source:</b> Rabbit	<b>UNIPROT ID:</b> P20851-1	<b>Recommended Dilutions:</b> WB: 1:5000-1:50000
<b>Isotype:</b> IgG	<b>Full Name:</b> complement component 4 binding protein, beta	
<b>Immunogen Catalog Number:</b> EG2976	<b>Calculated MW:</b> 28 kDa	
	<b>Observed MW:</b> 45 kDa	

## Applications

<b>Tested Applications:</b> WB, ELISA	<b>Positive Controls:</b> WB : human plasma,
<b>Species Specificity:</b> human	

## Background Information

C4b-binding protein (C4BP) is a large oligomeric glycoprotein, present in plasma at a concentration of approximately 200 mg/L (PMID: 24218259). It is the main inhibitor of the classical complement and lectin pathway. C4BP is composed of two polypeptides (alpha and beta chains), which have molecular weights of 70 and 45 kDa, respectively (PMID: 7561113).

## Storage

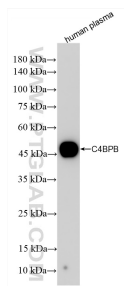
**Storage:**  
Store at -20°C. Stable for one year after shipment.  
**Storage Buffer:**  
PBS with 0.02% sodium azide and 50% glycerol, pH7.3  
Aliquoting is unnecessary for -20°C storage

\*\*\* 20ul sizes contain 0.1% BSA

For technical support and original validation data for this product please contact:  
T: 1 (888) 4PTGLAB (1-888-478-4522) (toll free in USA), or 1(312) 455-8498 (outside USA)  
E: [proteintech@ptglab.com](mailto:proteintech@ptglab.com)  
W: [ptglab.com](http://ptglab.com)

This product is exclusively available under Proteintech Group brand and is not available to purchase from any other manufacturer.

## Selected Validation Data



Human plasma sample was subjected to SDS PAGE followed by western blot with 85812-4-RR (C4BPB antibody) at dilution of 1:10000 incubated at room temperature for 1.5 hours.