

For Research Use Only

Mouse Esm1 Recombinant antibody, PBS Only (Capture/Detector)

Catalog Number: 85814-2-PBS



Basic Information

Catalog Number: 85814-2-PBS	GenBank Accession Number: NM_023612.3	Purification Method: Protein A purification
Size: 100ug , Concentration: 1 mg/ml by Nanodrop;	GeneID (NCBI): 71690	CloneNo.: 242968A5
Source: Rabbit	UNIPROT ID: Q9QYY7	
Isotype: IgG	Full Name: endothelial cell-specific molecule 1	
Immunogen Catalog Number: EG2784	Calculated MW: 20 kDa	

Applications

Tested Applications:
Cytometric bead array, Sandwich ELISA, Indirect ELISA, Sample test

Species Specificity:
mouse

Product Information

85814-2-PBS targets Esm1 as part of a matched antibody pair:

MP02164-1: 85814-3-PBS capture and 85814-2-PBS detection (validated in Cytometric bead array, Sandwich ELISA)

MP02164-2: 85814-2-PBS capture and 85814-1-PBS detection (validated in Cytometric bead array)

Unconjugated rabbit recombinant monoclonal antibody in PBS only (BSA and azide free) storage buffer at a concentration of 1 mg/mL, ready for conjugation. Created using Proteintech's proprietary in-house recombinant technology. Recombinant production enables unrivalled batch-to-batch consistency, easy scale-up, and future security of supply.

This conjugation ready format makes antibodies ideal for use in many applications including: ELISAs, multiplex assays requiring matched pairs, mass cytometry, and multiplex imaging applications. Antibody use should be optimized by the end user for each application and assay.

Storage

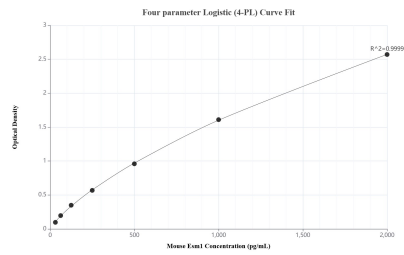
Storage:
Store at -80°C.

Storage Buffer:
PBS only, pH7.3

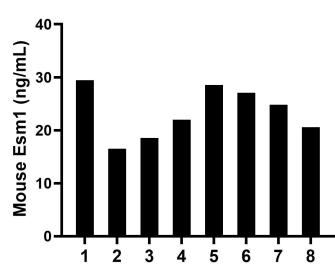
For technical support and original validation data for this product please contact:
T: 1 (888) 4PTGLAB (1-888-478-4522) (toll free in USA), or 1(312) 455-8498 (outside USA)
E: proteintech@ptglab.com
W: ptglab.com

This product is exclusively available under Proteintech Group brand and is not available to purchase from any other manufacturer.

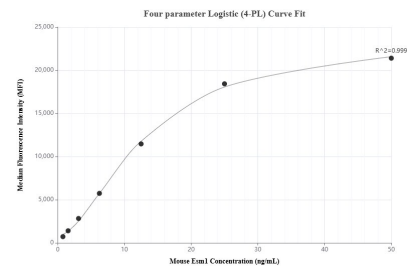
Selected Validation Data



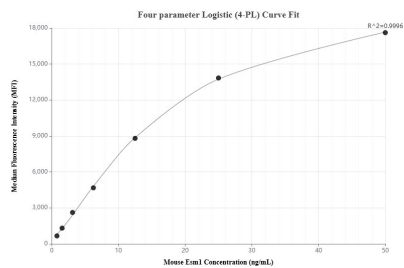
Sandwich ELISA standard curve of MP02164-1, Mouse Esm1 Recombinant Matched Antibody Pair - PBS only. 85814-3-PBS was coated to a plate as the capture antibody and incubated with serial dilutions of standard Eg2784. 85814-2-PBS was HRP conjugated as the detection antibody. Range: 31.25-2000 pg/mL



Serum of eight mice was measured. The Esm1 concentration of detected samples was determined to be 23.4 ng/mL with a range of 16.5-29.5 ng/mL.



Cytometric bead array standard curve of MP02164-1, MOUSE Esm1 Recombinant Matched Antibody Pair, PBS Only. Capture antibody: 85814-3-PBS. Detection antibody: 85814-2-PBS. Standard: Eg2784. Range: 0.781-50 ng/mL



Cytometric bead array standard curve of MP02164-2, MOUSE Esm1 Recombinant Matched Antibody Pair, PBS Only. Capture antibody: 85814-2-PBS. Detection antibody: 85814-1-PBS. Standard: Eg2784. Range: 0.781-50 ng/mL