

For Research Use Only

Mouse IL-19 Recombinant antibody, PBS Only (Detector)

Catalog Number: 85817-2-PBS



Basic Information

Catalog Number: 85817-2-PBS	GenBank Accession Number: NM_001009940.1	Purification Method: Protein A purification
Size: 100ug , Concentration: 1 mg/ml by Nanodrop;	GeneID (NCBI): 329244	CloneNo.: 242880F12
Source: Rabbit	UNIPROT ID: Q8CJ70	
Isotype: IgG	Full Name: interleukin 19	
Immunogen Catalog Number: EG2844	Calculated MW: 20 kDa	

Applications

Tested Applications:
WB, Cytometric bead array, Indirect ELISA

Species Specificity:
mouse

Product Information

85817-2-PBS targets IL-19 as part of a matched antibody pair:

MP02161-1: 85817-1-PBS capture and 85817-2-PBS detection (validated in Cytometric bead array)

MP02161-2: 85817-3-PBS capture and 85817-2-PBS detection (validated in Cytometric bead array)

Unconjugated rabbit recombinant monoclonal antibody in PBS only (BSA and azide free) storage buffer at a concentration of 1 mg/mL, ready for conjugation. Created using Proteintech's proprietary in-house recombinant technology. Recombinant production enables unrivalled batch-to-batch consistency, easy scale-up, and future security of supply.

This conjugation ready format makes antibodies ideal for use in many applications including: ELISAs, multiplex assays requiring matched pairs, mass cytometry, and multiplex imaging applications. Antibody use should be optimized by the end user for each application and assay.

Background Information

IL-19, a member of the IL-10 cytokine family (IL-10, -19, -20, -22, -24, -26, -28, and -29), is expressed in epithelial cells, endothelial cells, and macrophages. It can bind the interleukin-20 receptor complex IL-20R1/IL-20R2 and lead to the activation of the signal transducer and activator of transcription 3 (STAT3). IL-19 induces IL-6 and TNF- α production in monocytes. It also induces cell apoptosis and reactive oxygen species production in monocytes, which suggests a role of this cytokine in inflammatory responses. It is up-regulated in monocytes following stimulation with lipopolysaccharide (LPS), and granulocyte-macrophage colony-stimulating factor (GM-CSF). IL-19 alters the balance of Th1 and Th2 cells in favor of Th2 cells. IL-19 contributes to a range of diseases and disorders, such as breast cancer, squamous cell carcinoma of the skin, asthma, endotoxic shock, uremia, psoriasis, rheumatoid arthritis, and periodontal and vascular disease.

Storage

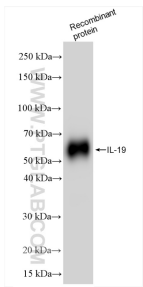
Storage:
Store at -80°C.

Storage Buffer:
PBS only, pH7.3

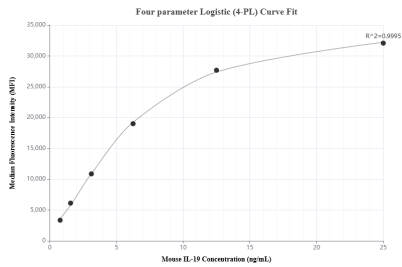
For technical support and original validation data for this product please contact:
T: 1 (888) 4PTGLAB (1-888-478-4522) (toll free in USA), or 1(312) 455-8498 (outside USA)
E: proteintech@ptglab.com
W: ptglab.com

This product is exclusively available under Proteintech Group brand and is not available to purchase from any other manufacturer.

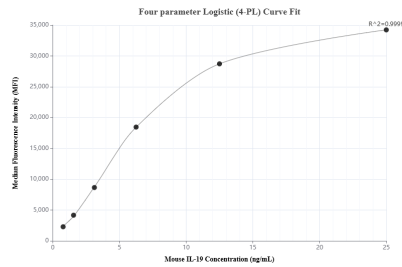
Selected Validation Data



Human IL-19 Recombinant proteins were subjected to SDS PAGE followed by western blot with 85817-2-RR (IL19 antibody) at dilution of 1:1000 and incubated at room temperature for 1.5 hours. This data was developed using the same antibody clone with 85817-2-PBS in a different storage buffer formulation.



Cytometric bead array standard curve of MP02161-2, MOUSE IL-19 Recombinant Matched Antibody Pair, PBS Only. Capture antibody: 85817-3-PBS. Detection antibody: 85817-2-PBS. Standard: Eg2844. Range: 0.781-25 ng/mL.



Cytometric bead array standard curve of MP02161-1, MOUSE IL-19 Recombinant Matched Antibody Pair, PBS Only. Capture antibody: 85817-1-PBS. Detection antibody: 85817-2-PBS. Standard: Eg2844. Range: 0.781-25 ng/mL.