

For Research Use Only

MOV10 Recombinant antibody, PBS Only

Catalog Number: 85818-5-PBS



Basic Information

Catalog Number:

85818-5-PBS

Size:

100ug , Concentration: 1 mg/ml by Nanodrop;

Source:

Rabbit

Isotype:

IgG

Immunogen Catalog Number:

AG0384

GenBank Accession Number:

BC002548

GeneID (NCBI):

4343

UNIPROT ID:

Q9HCE1

Full Name:

Mov10, Moloney leukemia virus 10, homolog (mouse)

Calculated MW:

114 kDa

Observed MW:

115 kDa

Purification Method:

Protein A purification

CloneNo.:

250130D2

Applications

Tested Applications:

WB, IF/ICC, Indirect ELISA

Species Specificity:

human, mouse, rat

Background Information

MOV10, also named as KIAA1631, belongs to the DNA2/NAM7 helicase family and SDE3 subfamily. It is required for RNA-mediated gene silencing by the RNA-induced silencing complex (RISC). Human MOV10 may regulate a wide range of RNA viruses and could also control the retrotransposition of endogenous retroelements in mammals (PMID:22727223). MOV10 has a broad antiretroviral activity that can target a wide range of retroviruses, and it could be actively involved in host defense against retroviral infection. MOV10 can potently inhibit HIV-1 replication at multiple stages (PMID:20215113). It is involved in the progression of telomerase-catalyzing reaction via the interaction of telomerase protein and telomere DNA.

Storage

Storage:

Store at -80°C.

Storage Buffer:

PBS only, pH7.3

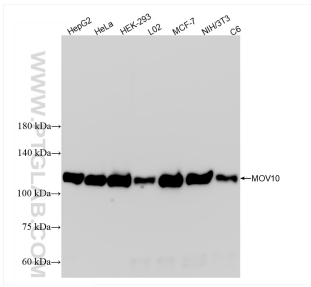
For technical support and original validation data for this product please contact:

T: 1 (888) 4PTGLAB (1-888-478-4522) (toll free in USA), or 1(312) 455-8498 (outside USA)

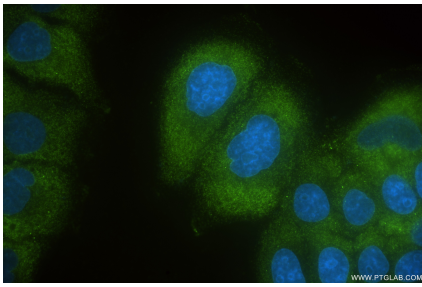
E: proteintech@ptglab.com
W: ptglab.com

This product is exclusively available under Proteintech Group brand and is not available to purchase from any other manufacturer.

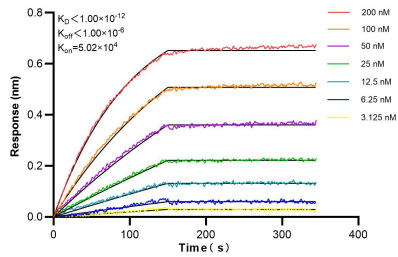
Selected Validation Data



Various lysates were subjected to SDS PAGE followed by western blot with 85818-5-RR (MOV10 antibody) at dilution of 1:30000 incubated at room temperature for 1.5 hours. This data was developed using the same antibody clone with 85818-5-PBS in a different storage buffer formulation.



Immunofluorescent analysis of (-20°C Ethanol) fixed HepG2 cells using MOV10 antibody (85818-5-RR, Clone: 250130D2) at dilution of 1:400 and CoraLite® 488-Conjugated Goat Anti-Rabbit IgG(H+L) (SA00013-2). This data was developed using the same antibody clone with 85818-5-PBS in a different storage buffer formulation.



Biolayer interferometry (BLI) kinetic assays of 85818-5-RR against Human MOV10 were performed. The affinity constant is below 1 pM.