

For Research Use Only

# PVALB Recombinant antibody, PBS Only (Capture)

Catalog Number: 85819-3-PBS



## Basic Information

|   |   |   |
|---|---|---|
| <b>Catalog Number:</b><br>85819-3-PBS                       | <b>GenBank Accession Number:</b><br>NM_002854 | <b>Purification Method:</b><br>Protein A purification |
| <b>Size:</b><br>100ug , Concentration: 1 mg/ml by Nanodrop; | <b>GeneID (NCBI):</b><br>5816                 | <b>CloneNo.:</b><br>250158A11                         |
| <b>Source:</b><br>Rabbit                                    | <b>UNIPROT ID:</b><br>P20472                  |   |
| <b>Isotype:</b><br>IgG                                      | <b>Full Name:</b><br>parvalbumin              |   |
| <b>Immunogen Catalog Number:</b><br>AG30189                 | <b>Calculated MW:</b><br>12 kDa               |   |

## Applications

**Tested Applications:**  
Cytometric bead array, Sandwich ELISA, Indirect ELISA, Sample test

**Species Specificity:**  
human

## Product Information

85819-3-PBS targets PVALB as part of a matched antibody pair:

MP02167-1: 85819-3-PBS capture and 85819-2-PBS detection (validated in Cytometric bead array, Sandwich ELISA)

Unconjugated rabbit recombinant monoclonal antibody in PBS only (BSA and azide free) storage buffer at a concentration of 1 mg/mL, ready for conjugation. Created using Proteintech's proprietary in-house recombinant technology. Recombinant production enables unrivalled batch-to-batch consistency, easy scale-up, and future security of supply.

This conjugation ready format makes antibodies ideal for use in many applications including: ELISAs, multiplex assays requiring matched pairs, mass cytometry, and multiplex imaging applications. Antibody use should be optimized by the end user for each application and assay.

## Storage

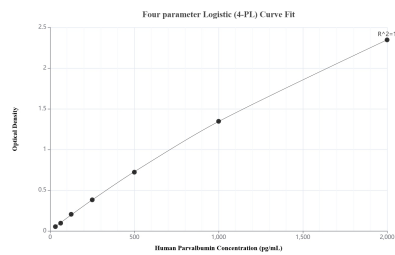
**Storage:**  
Store at -80°C.

**Storage Buffer:**  
PBS only, pH7.3

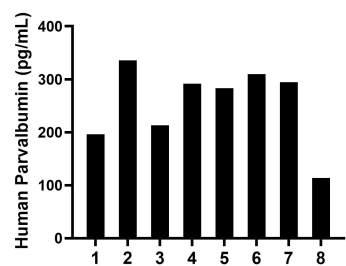
For technical support and original validation data for this product please contact:  
T: 1 (888) 4PTGLAB (1-888-478-4522) (toll free in USA), or 1(312) 455-8498 (outside USA)  
E: proteintech@ptglab.com  
W: ptglab.com

This product is exclusively available under Proteintech Group brand and is not available to purchase from any other manufacturer.

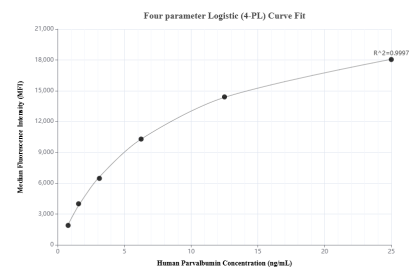
## Selected Validation Data



Sandwich ELISA standard curve of MP02167-1, Human Parvalbumin Recombinant Matched Antibody Pair - PBS only. 85819-3-PBS was coated to a plate as the capture antibody and incubated with serial dilutions of standard Ag30189. 85819-2-PBS was HRP conjugated as the detection antibody. Range: 31.25-2000 pg/mL



Serum of eight individual healthy human donors was measured. The Parvalbumin concentration of detected samples was determined to be 254.8 pg/mL with a range of 113.7-335.8 pg/mL



Cytometric bead array standard curve of MP02167-1, Parvalbumin Recombinant Matched Antibody Pair, PBS Only. Capture antibody: 85819-3-PBS. Detection antibody: 85819-2-PBS. Standard: Ag30189. Range: 0.781-25 ng/mL