

For Research Use Only

# Parvalbumin Recombinant antibody, PBS Only

Catalog Number: 85819-4-PBS



## Basic Information

|   |   |   |
|---|---|---|
| <b>Catalog Number:</b><br>85819-4-PBS                       | <b>GenBank Accession Number:</b><br>NM_002854 | <b>Purification Method:</b><br>Protein A purification |
| <b>Size:</b><br>100ug , Concentration: 1 mg/ml by Nanodrop; | <b>GeneID (NCBI):</b><br>5816                 | <b>CloneNo.:</b><br>250158B6                          |
| <b>Source:</b><br>Rabbit                                    | <b>UNIPROT ID:</b><br>P20472                  |   |
| <b>Isotype:</b><br>IgG                                      | <b>Full Name:</b><br>parvalbumin              |   |
| <b>Immunogen Catalog Number:</b><br>AG30189                 | <b>Calculated MW:</b><br>12 kDa               |   |

## Applications

**Tested Applications:**  
IHC, IF-P, Indirect ELISA

**Species Specificity:**  
human, mouse

## Background Information

PVALB is a high affinity calcium ion-binding protein that is structurally and functionally similar to calmodulin and troponin C. PVALB is expressed in high levels only in fast-contracting muscles and at lower levels in brain and several endocrine tissues. It is thought to be involved in muscle relaxation. Monomeric (12 kDa) and dimeric (24 kDa) forms, as well as trimeric Parvalbumin (38 kDa), have been described in a literature (PMID: 19616851).

## Storage

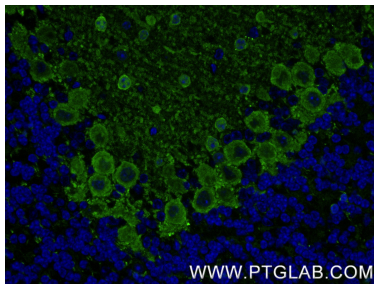
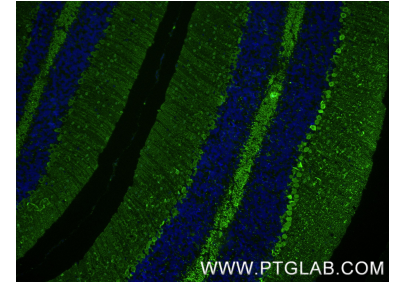
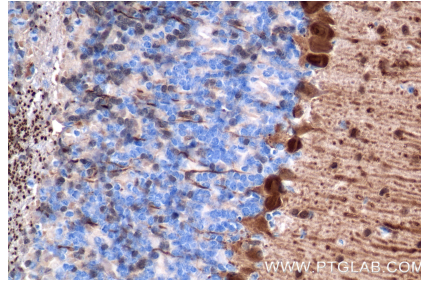
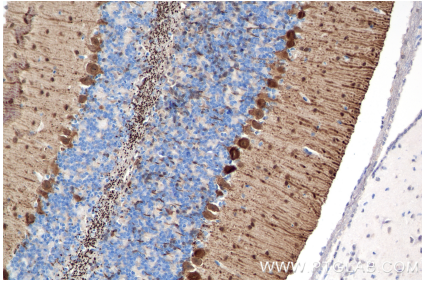
**Storage:**  
Store at -80°C.

**Storage Buffer:**  
PBS only, pH7.3

For technical support and original validation data for this product please contact:  
T: 1 (888) 4PTGLAB (1-888-478-4522) (toll free in USA), or 1(312) 455-8498 (outside USA)  
E: [proteintech@ptglab.com](mailto:proteintech@ptglab.com)  
W: [ptglab.com](http://ptglab.com)

This product is exclusively available under Proteintech Group brand and is not available to purchase from any other manufacturer.

## Selected Validation Data



Immunofluorescent analysis of (4% PFA) fixed paraffin-embedded mouse cerebellum tissue using Parvalbumin antibody (85819-4-RR, Clone: 250158B6) at dilution of 1:400 and CoraLite®488-Conjugated Goat Anti-Rabbit IgG(H+L) (SA00013-2). Heat mediated antigen retrieval with Tris-EDTA buffer (pH 9.0). This data was developed using the same antibody clone with 85819-4-PBS in a different storage buffer formulation.