

For Research Use Only

# LTBP1 Recombinant antibody, PBS Only (Capture/Detector)

Catalog Number: 85820-1-PBS



## Basic Information

<b>Catalog Number:</b> 85820-1-PBS	<b>GenBank Accession Number:</b> BC130289	<b>Purification Method:</b> Protein A purification
<b>Size:</b> 100ug, Concentration: 1 mg/ml by Nanodrop;	<b>GeneID (NCBI):</b> 4052	<b>CloneNo.:</b> 250127A9
<b>Source:</b> Rabbit	<b>UNIPROT ID:</b> Q14766	
<b>Isotype:</b> IgG	<b>Full Name:</b> latent transforming growth factor beta binding protein 1	
<b>Immunogen Catalog Number:</b> AG25392	<b>Calculated MW:</b> 1721 aa, 187 kDa	
	<b>Observed MW:</b> 150 kDa	

## Applications

**Tested Applications:**  
WB, Cytometric bead array, Indirect ELISA

**Species Specificity:**  
human, mouse, rat

## Product Information

85820-1-PBS targets LTBP1 as part of a matched antibody pair:

MP02129-1: 85820-1-PBS capture and 85820-3-PBS detection (validated in Cytometric bead array)

MP02129-2: 85820-2-PBS capture and 85820-1-PBS detection (validated in Cytometric bead array)

Unconjugated rabbit recombinant monoclonal antibody in PBS only (BSA and azide free) storage buffer at a concentration of 1 mg/mL, ready for conjugation. Created using Proteintech's proprietary in-house recombinant technology. Recombinant production enables unrivalled batch-to-batch consistency, easy scale-up, and future security of supply.

This conjugation ready format makes antibodies ideal for use in many applications including: ELISAs, multiplex assays requiring matched pairs, mass cytometry, and multiplex imaging applications. Antibody use should be optimized by the end user for each application and assay.

## Background Information

Latent Transforming Growth Factor Beta Binding Protein 1 (LTBP1) is a large extracellular matrix protein that belongs to the latent TGF-beta binding protein family. It plays a crucial role in the regulation of TGF-beta, a multifunctional cytokine involved in various cellular processes such as cell growth, differentiation, and immune response. LTBP1 is essential for TGF-beta folding, secretion, matrix localization, and activation. It forms latent complexes with TGF-beta by covalently binding the TGF-beta propeptide (LAP) via disulfide bonds in the endoplasmic reticulum. This complex is then secreted and targeted to the extracellular matrix, where TGF-beta can be activated by various mechanism

## Storage

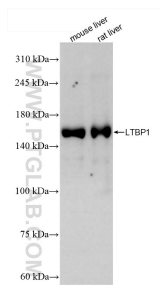
**Storage:**  
Store at -80°C.

**Storage Buffer:**  
PBS only, pH7.3

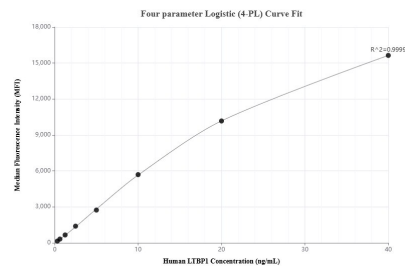
For technical support and original validation data for this product please contact:  
T: 1 (888) 4PTGLAB (1-888-478-4522) (toll free in USA), or 1(312) 455-8498 (outside USA)  
E: [proteintech@ptglab.com](mailto:proteintech@ptglab.com)  
W: [ptglab.com](http://ptglab.com)

This product is exclusively available under Proteintech Group brand and is not available to purchase from any other manufacturer.

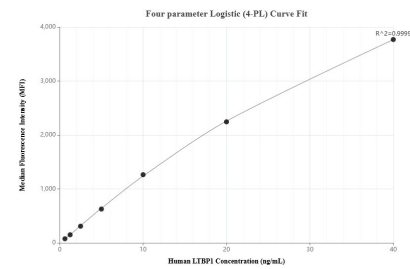
## Selected Validation Data



Various lysates were subjected to SDS PAGE followed by western blot with 85820-1-RR (LTBP1 antibody) at dilution of 1:10000 incubated at room temperature for 1.5 hours. This data was developed using the same antibody clone with 85820-1-PBS in a different storage buffer formulation.



Cytometric bead array standard curve of MP02129-1, LTBP1 Recombinant Matched Antibody Pair, PBS Only. Capture antibody: 85820-1-PBS. Detection antibody: 85820-3-PBS. Standard: Ag25392. Range: 0.313-40 ng/mL.



Cytometric bead array standard curve of MP02129-2, LTBP1 Recombinant Matched Antibody Pair, PBS Only. Capture antibody: 85820-2-PBS. Detection antibody: 85820-1-PBS. Standard: Ag25392. Range: 0.625-40 ng/mL.