

For Research Use Only

LTBP1 Recombinant antibody

Catalog Number: 85820-1-RR



Basic Information

Catalog Number: 85820-1-RR	GenBank Accession Number: BC130289	Purification Method: Protein A purification
Size: 100ul , Concentration: 1000 µg/ml by Nanodrop;	GeneID (NCBI): 4052	CloneNo.: 250127A9
Source: Rabbit	UNIPROT ID: Q14766	Recommended Dilutions: WB 1:5000-1:50000
Isotype: IgG	Full Name: latent transforming growth factor beta binding protein 1	
Immunogen Catalog Number: AG25392	Calculated MW: 1721 aa, 187 kDa	
	Observed MW: 150 kDa	

Applications

Tested Applications: WB, ELISA	Positive Controls: WB : mouse liver tissue, rat liver tissue
Species Specificity: human, mouse, rat	

Background Information

Latent Transforming Growth Factor Beta Binding Protein 1 (LTBP1) is a large extracellular matrix protein that belongs to the latent TGF-beta binding protein family. It plays a crucial role in the regulation of TGF-beta, a multifunctional cytokine involved in various cellular processes such as cell growth, differentiation, and immune response. LTBP1 is essential for TGF-beta folding, secretion, matrix localization, and activation. It forms latent complexes with TGF-beta by covalently binding the TGF-beta propeptide (LAP) via disulfide bonds in the endoplasmic reticulum. This complex is then secreted and targeted to the extracellular matrix, where TGF-beta can be activated by various mechanism

Storage

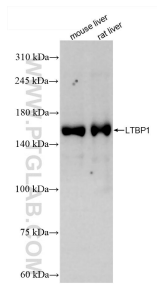
Storage:
Store at -20°C. Stable for one year after shipment.
Storage Buffer:
PBS with 0.02% sodium azide and 50% glycerol, pH7.3
Aliquoting is unnecessary for -20°C storage

*** 20ul sizes contain 0.1% BSA

For technical support and original validation data for this product please contact:
T: 1 (888) 4PTGLAB (1-888-478-4522) (toll free in USA), or 1(312) 455-8498 (outside USA)
E: proteintech@ptglab.com
W: ptglab.com

This product is exclusively available under Proteintech Group brand and is not available to purchase from any other manufacturer.

Selected Validation Data



Various lysates were subjected to SDS PAGE followed by western blot with 85820-1-RR (LTBP1 antibody) at dilution of 1:10000 incubated at room temperature for 1.5 hours.