

For Research Use Only

LIFR Recombinant antibody

Catalog Number: 85827-2-RR



Basic Information

Catalog Number: 85827-2-RR	GenBank Accession Number: NM_001127671.1	Purification Method: Protein A purification
Size: 100ul , Concentration: 1000 µg/ml by Nanodrop;	GeneID (NCBI): 3977	CloneNo.: 250110B11
Source: Rabbit	UNIPROT ID: P42702-1	Recommended Dilutions: WB 1:500-1:2000
Isotype: IgG	Full Name: leukemia inhibitory factor receptor alpha	
Immunogen Catalog Number: EG2599	Calculated MW: 124 kDa	
	Observed MW: 190 kDa, 170 kDa	

Applications

Tested Applications: WB, ELISA	Positive Controls: WB : HeLa cells, PC-3 cells, PANC-1 cells
Species Specificity: human	

Background Information

LIFR, also known as CD118, is a subunit of a receptor for leukemia inhibitory factor (LIF). LIF is a pleiotropic cytokine of the interleukin-6 family that affects the differentiation, survival, and proliferation of a wide variety of cells in the adult and the embryo. LIFR is the low-affinity binding chain that, together with the high-affinity converter subunit gp130, forms a high-affinity receptor complex that mediates the action of LIF. The high-affinity complex also binds a related cytokine, oncostatin M (PMID: 8999038). LIFR has also been identified as a breast cancer metastasis suppressor that functions through the HIPPO-YAP pathway (PMID: 23001183). LIFR appeared as doublets with 190 and 170 kDa (PMID: 10858440). They represented different glycosylated forms of the LIFR in different steps of protein maturation.

Storage

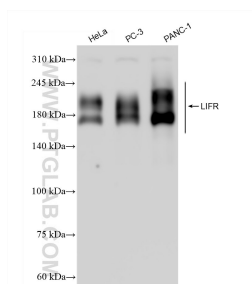
Storage:
Store at -20°C. Stable for one year after shipment.
Storage Buffer:
PBS with 0.02% sodium azide and 50% glycerol, pH7.3
Aliquoting is unnecessary for -20°C storage

*** 20ul sizes contain 0.1% BSA

For technical support and original validation data for this product please contact:
T: 1 (888) 4PTGLAB (1-888-478-4522) (toll free in USA), or 1(312) 455-8498 (outside USA)
E: proteintech@ptglab.com
W: ptglab.com

This product is exclusively available under Proteintech Group brand and is not available to purchase from any other manufacturer.

Selected Validation Data



Various lysates were subjected to SDS PAGE followed by western blot with 85827-2-RR (LIFR antibody) at dilution of 1:1000 incubated at room temperature for 1.5 hours.