

For Research Use Only

Mouse Ctf1 Recombinant antibody, PBS Only

Catalog Number: 85828-4-PBS



Basic Information

Catalog Number:

85828-4-PBS

Size:

100ug , Concentration: 1 mg/ml by Nanodrop;

Source:

Rabbit

Isotype:

IgG

Immunogen Catalog Number:

EG2867

GenBank Accession Number:

NM_007795.1

GeneID (NCBI):

13019

UNIPROT ID:

Q60753

Full Name:

cardiotrophin 1

Calculated MW:

22 kDa

Observed MW:

22 kDa

Purification Method:

Protein A purification

CloneNo.:

242890C10

Applications

Tested Applications:

WB, Indirect ELISA

Species Specificity:

mouse, rat

Background Information

CTF1 (Cardiotrophin-1) is a member of the interleukin-6 (IL-6) family of cytokines. It is a secreted protein that induces cardiac myocyte hypertrophy in vitro and has been shown to bind and activate the IL-6ST/gp130 receptor. CTF1 plays a crucial role in various physiological and pathological processes, including cardiac function, metabolism, and cancer progression.

Storage

Storage:

Store at -80°C.

Storage Buffer:

PBS only, pH7.3

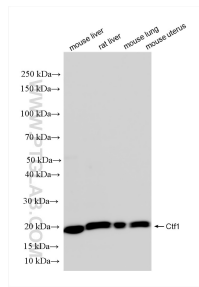
For technical support and original validation data for this product please contact:

T: 1 (888) 4PTGLAB (1-888-478-4522) (toll free in USA), or 1(312) 455-8498 (outside USA)

E: proteintech@ptglab.com
W: ptglab.com

This product is exclusively available under Proteintech Group brand and is not available to purchase from any other manufacturer.

Selected Validation Data



Various lysates were subjected to SDS PAGE followed by western blot with 85828-4-RR (Ctf1 antibody) at dilution of 1:1000 incubated at room temperature for 1.5 hours. This data was developed using the same antibody clone with 85828-4-PBS in a different storage buffer formulation.