

For Research Use Only

Ctf1 Recombinant antibody

Catalog Number: 85828-4-RR



Basic Information

Catalog Number: 85828-4-RR	GenBank Accession Number: NM_007795.1	Purification Method: Protein A purification
Size: 100ul , Concentration: 1000 µg/ml by Nanodrop;	GeneID (NCBI): 13019	CloneNo.: 242890C10
Source: Rabbit	UNIPROT ID: Q60753	Recommended Dilutions: WB 1:500-1:2000
Isotype: IgG	Full Name: cardiotrophin 1	
Immunogen Catalog Number: EG2867	Calculated MW: 22 kDa	
	Observed MW: 22 kDa	

Applications

Tested Applications: WB, ELISA	Positive Controls:
Species Specificity: mouse, rat	WB : mouse liver tissue, rat liver tissue, mouse lung tissue, mouse uterus tissue

Background Information

CTF1 (Cardiotrophin-1) is a member of the interleukin-6 (IL-6) family of cytokines. It is a secreted protein that induces cardiac myocyte hypertrophy in vitro and has been shown to bind and activate the IL-6ST/gp130 receptor. CTF1 plays a crucial role in various physiological and pathological processes, including cardiac function, metabolism, and cancer progression.

Storage

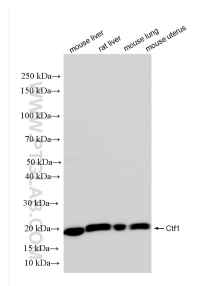
Storage:
Store at -20°C. Stable for one year after shipment.
Storage Buffer:
PBS with 0.02% sodium azide and 50% glycerol, pH7.3
Aliquoting is unnecessary for -20°C storage

*** 20ul sizes contain 0.1% BSA

For technical support and original validation data for this product please contact:
T: 1 (888) 4PTGLAB (1-888-478-4522) (toll free in USA), or 1(312) 455-8498 (outside USA)
E: proteintech@ptglab.com
W: ptglab.com

This product is exclusively available under Proteintech Group brand and is not available to purchase from any other manufacturer.

Selected Validation Data



Various lysates were subjected to SDS PAGE followed by western blot with 85828-4-RR (Ctf1 antibody) at dilution of 1:1000 incubated at room temperature for 1.5 hours.