

For Research Use Only

# C6orf15 Recombinant antibody, PBS Only (Detector)

Catalog Number: 85830-1-PBS



## Basic Information

|   |   |   |
|---|---|---|
| <b>Catalog Number:</b><br>85830-1-PBS                       | <b>GenBank Accession Number:</b><br>BC153157            | <b>Purification Method:</b><br>Protein A purification |
| <b>Size:</b><br>100ug , Concentration: 1 mg/ml by Nanodrop; | <b>GeneID (NCBI):</b><br>29113                          | <b>CloneNo.:</b><br>250126F4                          |
| <b>Source:</b><br>Rabbit                                    | <b>UNIPROT ID:</b><br>Q6UXA7                            |   |
| <b>Isotype:</b><br>IgG                                      | <b>Full Name:</b><br>chromosome 6 open reading frame 15 |   |
| <b>Immunogen Catalog Number:</b><br>AG20276                 | <b>Calculated MW:</b><br>325 aa, 34 kDa                 |   |
|   | <b>Observed MW:</b><br>55 kDa                           |   |

## Applications

**Tested Applications:**  
WB, Cytometric bead array, Indirect ELISA

**Species Specificity:**  
human

## Product Information

85830-1-PBS targets C6orf15 as part of a matched antibody pair:

MP02146-2: 85830-2-PBS capture and 85830-1-PBS detection (validated in Cytometric bead array)

Unconjugated rabbit recombinant monoclonal antibody in PBS only (BSA and azide free) storage buffer at a concentration of 1 mg/mL, ready for conjugation. Created using Proteintech's proprietary in-house recombinant technology. Recombinant production enables unrivalled batch-to-batch consistency, easy scale-up, and future security of supply.

This conjugation ready format makes antibodies ideal for use in many applications including: ELISAs, multiplex assays requiring matched pairs, mass cytometry, and multiplex imaging applications. Antibody use should be optimized by the end user for each application and assay.

## Background Information

C6orf15, also named as Protein STG, is a 325 amino acid protein, which as a secreted protein is expressed in skin and tonsils. The calculated molecular weight of C6orf15 is 34 kDa, but we detected a 50-55 kDa protein by western blot. C6orf15 may contains some modified residues.

## Storage

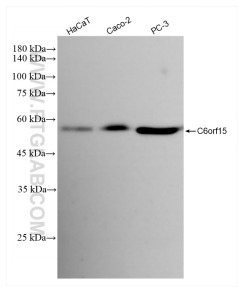
**Storage:**  
Store at -80°C.

**Storage Buffer:**  
PBS only, pH7.3

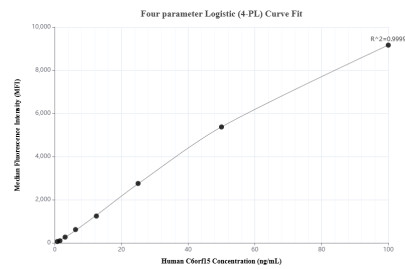
For technical support and original validation data for this product please contact:  
T: 1 (888) 4PTGLAB (1-888-478-4522) (toll free in USA), or 1(312) 455-8498 (outside USA)  
E: [proteintech@ptglab.com](mailto:proteintech@ptglab.com)  
W: [ptglab.com](http://ptglab.com)

This product is exclusively available under Proteintech Group brand and is not available to purchase from any other manufacturer.

## Selected Validation Data



Various lysates were subjected to SDS PAGE followed by western blot with 85830-1-RR (C6orf15 antibody) at dilution of 1:2000 incubated at room temperature for 1.5 hours. This data was developed using the same antibody clone with 85830-1-PBS in a different storage buffer formulation.



Cytometric bead array standard curve of MP02146-2, C6orf15 Recombinant Matched Antibody Pair, PBS Only. Capture antibody: 85830-2-PBS. Detection antibody: 85830-1-PBS. Standard: Ag20276. Range: 0.781-100 ng/mL