

For Research Use Only

CLIC1 Recombinant antibody

Catalog Number: 85831-4-RR



Basic Information

Catalog Number:

85831-4-RR

Size:

100ul , Concentration: 1000 µg/ml by Nanodrop;

Source:

Rabbit

Isotype:

IgG

Immunogen Catalog Number:

AG6049

GenBank Accession Number:

BC064527

GeneID (NCBI):

1192

UNIPROT ID:

O00299

Full Name:

chloride intracellular channel 1

Calculated MW:

27 kDa

Observed MW:

27-32 kDa

Purification Method:

Protein A purification

CloneNo.:

250143E11

Recommended Dilutions:

WB 1:5000-1:50000

Applications

Tested Applications:

WB, ELISA

Species Specificity:

human, mouse, rat

Positive Controls:

WB : HeLa cells, rat spleen tissue, HL-60 cells, C2C12 cells, RAW 264.7 cells, C6 cells, mouse spleen tissue

Storage

Storage:

Store at -20°C. Stable for one year after shipment.

Storage Buffer:

PBS with 0.02% sodium azide and 50% glycerol, pH7.3

Aliquoting is unnecessary for -20°C storage

*** 20ul sizes contain 0.1% BSA

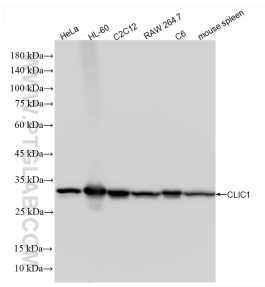
For technical support and original validation data for this product please contact:

T: 1 (888) 4PTGLAB (1-888-478-4522) (toll free in USA), or 1(312) 455-8498 (outside USA)

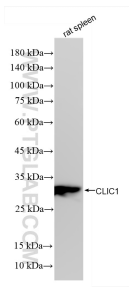
E: proteintech@ptglab.com
W: ptglab.com

This product is exclusively available under Proteintech Group brand and is not available to purchase from any other manufacturer.

Selected Validation Data



Various lysates were subjected to SDS PAGE followed by western blot with 85831-4-RR (CLIC1 antibody) at dilution of 1:10000 incubated at room temperature for 1.5 hours.



Various lysates were subjected to SDS PAGE followed by western blot with 85831-4-RR (CLIC1 antibody) at dilution of 1:10000 incubated at room temperature for 1.5 hours.