

For Research Use Only

CLIC1 Recombinant antibody, PBS Only (Capture)

Catalog Number: 85831-5-PBS



Basic Information

Catalog Number: 85831-5-PBS	GenBank Accession Number: BC064527	Purification Method: Protein A purification
Size: 100ug , Concentration: 1 mg/ml by Nanodrop;	GeneID (NCBI): 1192	CloneNo.: 250143D10
Source: Rabbit	UNIPROT ID: O00299	
Isotype: IgG	Full Name: chloride intracellular channel 1	
Immunogen Catalog Number: AG6049	Calculated MW: 27 kDa	

Applications

Tested Applications:
Sandwich ELISA, Indirect ELISA, Sample test

Species Specificity:
human

Product Information

85831-5-PBS targets CLIC1 as part of a matched antibody pair:

MP02147-3: 85831-5-PBS capture and 85831-2-PBS detection (validated in Sandwich ELISA)

Unconjugated rabbit recombinant monoclonal antibody in PBS only (BSA and azide free) storage buffer at a concentration of 1 mg/mL, ready for conjugation. Created using Proteintech's proprietary in-house recombinant technology. Recombinant production enables unrivalled batch-to-batch consistency, easy scale-up, and future security of supply.

This conjugation ready format makes antibodies ideal for use in many applications including: ELISAs, multiplex assays requiring matched pairs, mass cytometry, and multiplex imaging applications. Antibody use should be optimized by the end user for each application and assay.

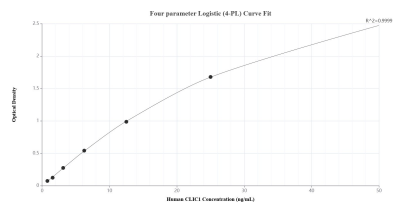
Storage

Storage:
Store at -80°C.
Storage Buffer:
PBS only, pH7.3

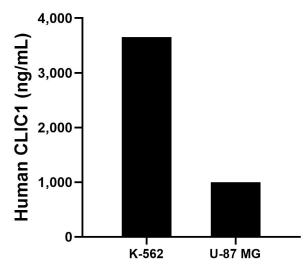
For technical support and original validation data for this product please contact:
T: 1 (888) 4PTGLAB (1-888-478-4522) (toll free in USA), or 1(312) 455-8498 (outside USA)
E: proteintech@ptglab.com
W: ptglab.com

This product is exclusively available under Proteintech Group brand and is not available to purchase from any other manufacturer.

Selected Validation Data



Sandwich ELISA standard curve of MP02147-3, Human CLIC1 Recombinant Matched Antibody Pair - PBS only. 85831-5-PBS was coated to a plate as the capture antibody and incubated with serial dilutions of standard Ag6049. 85831-2-PBS was HRP conjugated as the detection antibody. Range: 0.781-50 ng/mL



The mean CLIC1 concentration was determined to be 3,651.74 ng/mL in K-562 cell extract based on a 2.40 mg/mL extract load and 998.13 ng/mL in U-87 MG cell extract based on a 2.00 mg/mL extract load.