

For Research Use Only

Mouse MBL Recombinant antibody, PBS Only (Capture)

Catalog Number: 85835-4-PBS



Basic Information

Catalog Number: 85835-4-PBS	GenBank Accession Number: NM_010776.1	Purification Method: Protein A purification
Size: 100ug , Concentration: 1 mg/ml by Nanodrop;	GeneID (NCBI): 17195	CloneNo.: 250108E11
Source: Rabbit	UNIPROT ID: P41317	
Isotype: IgG	Full Name: mannose-binding lectin (protein C) 2	
Immunogen Catalog Number: EG3157	Calculated MW: 26 kDa	
	Observed MW: 32 kDa	

Applications

Tested Applications:
WB, Cytometric bead array, Indirect ELISA

Species Specificity:
mouse, rat

Product Information

85835-4-PBS targets MBL as part of a matched antibody pair:

MP02145-1: 85835-4-PBS capture and 85835-3-PBS detection (validated in Cytometric bead array)

Unconjugated rabbit recombinant monoclonal antibody in PBS only (BSA and azide free) storage buffer at a concentration of 1 mg/mL, ready for conjugation. Created using Proteintech's proprietary in-house recombinant technology. Recombinant production enables unrivalled batch-to-batch consistency, easy scale-up, and future security of supply.

This conjugation ready format makes antibodies ideal for use in many applications including: ELISAs, multiplex assays requiring matched pairs, mass cytometry, and multiplex imaging applications. Antibody use should be optimized by the end user for each application and assay.

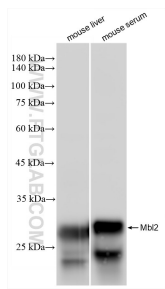
Storage

Storage:
Store at -80°C.
Storage Buffer:
PBS only, pH7.3

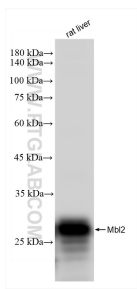
For technical support and original validation data for this product please contact:
T: 1 (888) 4PTGLAB (1-888-478-4522) (toll free in USA), or 1(312) 455-8498 (outside USA)
E: proteintech@ptglab.com
W: ptglab.com

This product is exclusively available under Proteintech Group brand and is not available to purchase from any other manufacturer.

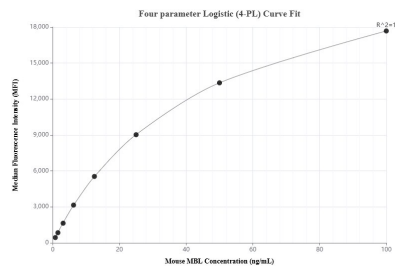
Selected Validation Data



Various lysates were subjected to SDS PAGE followed by western blot with 85835-4-RR (Mbl2 antibody) at dilution of 1:5000 incubated at room temperature for 1.5 hours. This data was developed using the same antibody clone with 85835-4-PBS in a different storage buffer formulation.



rat liver tissue were subjected to SDS PAGE followed by western blot with 85835-4-RR (Mbl2 antibody) at dilution of 1:5000 incubated at room temperature for 1.5 hours. This data was developed using the same antibody clone with 85835-4-PBS in a different storage buffer formulation.



Cytometric bead array standard curve of MP02145-1, MOUSE MBL Recombinant Matched Antibody Pair, PBS Only. Capture antibody: 85835-4-PBS. Detection antibody: 85835-3-PBS. Standard: Eg3157. Range: 0.781-100 ng/mL.