

For Research Use Only

# SENP3 Recombinant antibody, PBS Only (Capture)

Catalog Number: 85837-3-PBS



## Basic Information

<b>Catalog Number:</b> 85837-3-PBS	<b>GenBank Accession Number:</b> BC080658	<b>Purification Method:</b> Protein A purification
<b>Size:</b> 100ug , Concentration: 1 mg/ml by Nanodrop;	<b>GeneID (NCBI):</b> 26168	<b>CloneNo.:</b> 250153A9
<b>Source:</b> Rabbit	<b>UNIPROT ID:</b> Q9H4L4	
<b>Isotype:</b> IgG	<b>Full Name:</b> SUMO1/sentrin/SMT3 specific peptidase 3	
<b>Immunogen Catalog Number:</b> AG11911	<b>Calculated MW:</b> 574 aa, 65 kDa	
	<b>Observed MW:</b> 65-70 kDa	

## Applications

**Tested Applications:**  
WB, IF/ICC, Cytometric bead array, Indirect ELISA

**Species Specificity:**  
human, mouse

## Product Information

85837-3-PBS targets SENP3 as part of a matched antibody pair:

MP02141-1: 85837-3-PBS capture and 85837-1-PBS detection (validated in Cytometric bead array)

MP02141-2: 85837-3-PBS capture and 85837-2-PBS detection (validated in Cytometric bead array)

Unconjugated rabbit recombinant monoclonal antibody in PBS only (BSA and azide free) storage buffer at a concentration of 1 mg/mL, ready for conjugation. Created using Proteintech's proprietary in-house recombinant technology. Recombinant production enables unrivalled batch-to-batch consistency, easy scale-up, and future security of supply.

This conjugation ready format makes antibodies ideal for use in many applications including: ELISAs, multiplex assays requiring matched pairs, mass cytometry, and multiplex imaging applications. Antibody use should be optimized by the end user for each application and assay.

## Background Information

SENP3 (Sentrin-specific protease 3) is also named as SSP3, SUSP3 and belongs to the peptidase C48 family. It acts as an essential factor for ribosome biogenesis. SENP3 might regulate the sumoylation of other substrates through directly binding or mediating association with NPM1 at the nucleolus and other subcellular compartments.

## Storage

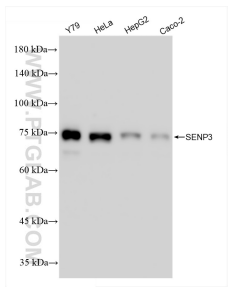
**Storage:**  
Store at -80°C.

**Storage Buffer:**  
PBS only, pH7.3

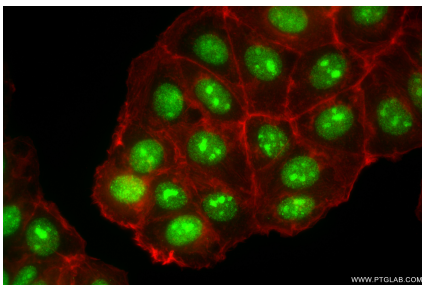
For technical support and original validation data for this product please contact:  
T: 1 (888) 4PTGLAB (1-888-478-4522) (toll free in USA), or 1(312) 455-8498 (outside USA)  
E: [proteintech@ptglab.com](mailto:proteintech@ptglab.com)  
W: [ptglab.com](http://ptglab.com)

This product is exclusively available under Proteintech Group brand and is not available to purchase from any other manufacturer.

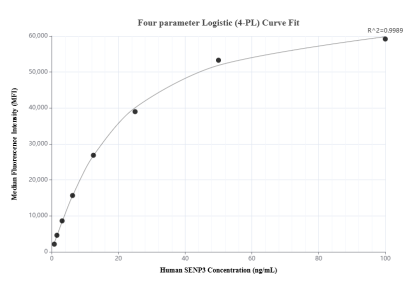
Selected Validation Data



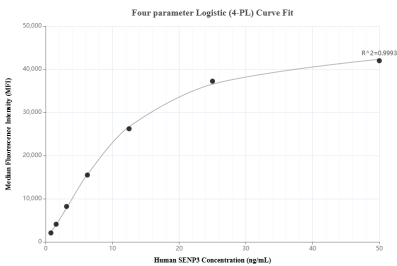
Various lysates were subjected to SDS PAGE followed by western blot with 85837-3-RR (SENP3 antibody) at dilution of 1:2000 incubated at room temperature for 1.5 hours. This data was developed using the same antibody clone with 85837-3-PBS in a different storage buffer formulation.



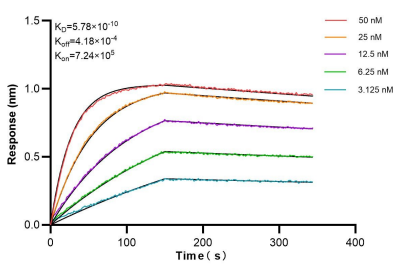
Immunofluorescent analysis of (4% PFA) fixed MCF-7 cells using SENP3 antibody (85837-3-RR, Clone: 250153A9) at dilution of 1:500 and CoraLite® 488-Conjugated Goat Anti-Rabbit IgG(H+L) (SA00013-2), CL594-Phalloidin (red). This data was developed using the same antibody clone with 85837-3-PBS in a different storage buffer formulation.



Cytometric bead array standard curve of MP02141-2, SENP3 Recombinant Matched Antibody Pair, PBS Only. Capture antibody: 85837-3-PBS. Detection antibody: 85837-2-PBS. Standard: Ag11911. Range: 0.781-100 ng/mL.



Cytometric bead array standard curve of MP02141-1, SENP3 Recombinant Matched Antibody Pair, PBS Only. Capture antibody: 85837-3-PBS. Detection antibody: 85837-1-PBS. Standard: Ag11911. Range: 0.781-50 ng/mL.



Biolayer interferometry (BLI) kinetic assays of 85837-3-RR against Human SENP3 were performed. The affinity constant is 0.578 nM.