

For Research Use Only

SENP3 Recombinant antibody

Catalog Number: 85837-3-RR



Basic Information

| | | |
|--|---|--|
| Catalog Number: 85837-3-RR | GenBank Accession Number: BC080658 | Purification Method: Protein A purification |
| Size: 100ul , Concentration: 1000 µg/ml by Nanodrop; | GeneID (NCBI): 26168 | CloneNo.: 250153A9 |
| Source: Rabbit | UNIPROT ID: Q9H4L4 | Recommended Dilutions: WB 1:1000-1:4000 IF/ICC 1:250-1:1000 |
| Isotype: IgG | Full Name: SUMO1/sentrin/SMT3 specific peptidase 3 | |
| Immunogen Catalog Number: AG11911 | Calculated MW: 574 aa, 65 kDa | |
| | Observed MW: 65-70 kDa | |

Applications

| | |
|--|---|
| Tested Applications: WB, IF/ICC, ELISA | Positive Controls: |
| Species Specificity: human, mouse | WB : Y79 cells, NIH/3T3 cells, HeLa cells, HepG2 cells, Caco-2 cells |
| | IF/ICC : MCF-7 cells, |

Background Information

SEN3(Sentrin-specific protease 3) is also named as SSP3, SUSP3 and belongs to the peptidase C48 family. It acts as an essential factor for ribosome biogenesis. SEN3 might regulate the sumoylation of other substrates through directly binding or mediating association with NPM1 at the nucleolus and other subcellular compartments.

Storage

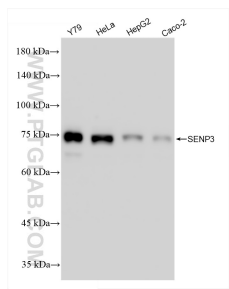
Storage:
Store at -20°C. Stable for one year after shipment.
Storage Buffer:
PBS with 0.02% sodium azide and 50% glycerol, pH7.3
Aliquoting is unnecessary for -20°C storage

*** 20ul sizes contain 0.1% BSA

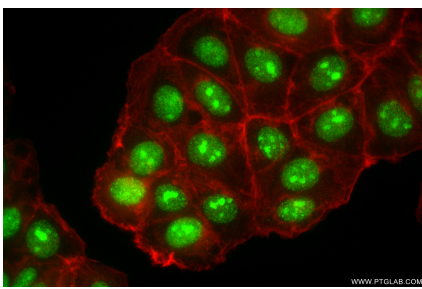
For technical support and original validation data for this product please contact:
T: 1 (888) 4PTGLAB (1-888-478-4522) (toll free in USA), or 1(312) 455-8498 (outside USA)
E: proteintech@ptglab.com
W: ptglab.com

This product is exclusively available under Proteintech Group brand and is not available to purchase from any other manufacturer.

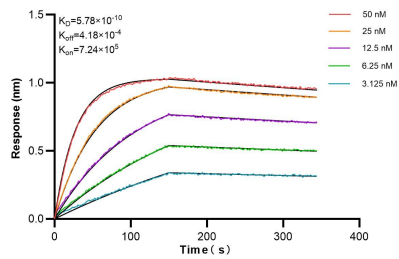
Selected Validation Data



Various lysates were subjected to SDS PAGE followed by western blot with 85837-3-RR (SENP3 antibody) at dilution of 1:2000 incubated at room temperature for 1.5 hours.



Immunofluorescent analysis of (4% PFA) fixed MCF-7 cells using SENP3 antibody (85837-3-RR, Clone: 250153A9) at dilution of 1:500 and CoraLite® 488-Conjugated Goat Anti-Rabbit IgG(H+L) (SA00013-2), CL594-Phalloidin (red).



Biolayer interferometry (BLI) kinetic assays of 85837-3-RR against Human SENP3 were performed. The affinity constant is 0.578 nM.