

For Research Use Only

Mouse Cathepsin B Recombinant monoclonal antibody, PBS Only

Catalog Number:85841-5-PBS



Basic Information

Catalog Number: 85841-5-PBS	GenBank Accession Number: NM_007798.3	Purification Method: Protein A purification
Size: 100ug , Concentration: 1 mg/ml by Nanodrop;	GeneID (NCBI): 13030	CloneNo.: 243020A5
Source: Rabbit	UNIPROT ID: P10605	
Isotype: IgG	Full Name: cathepsin B	
Immunogen Catalog Number: EG3028	Calculated MW: 37 kDa	
	Observed MW: 31 kDa, 39 kDa	

Applications

Tested Applications:
WB, IHC, IF/ICC, FC (Intra), Indirect ELISA

Species Specificity:
mouse

Background Information

CTSB(Cathepsin B) is also named as CPSB and belongs to the peptidase C1 family. It participates in intracellular degradation and turnover of proteins. Cathepsin B precursors found in human malignant ascites fluid do not possess mannose-rich carbohydrates suggesting that a defect in the post translational processing of carbohydrate moieties on tumor. Cathepsin B exists as both glycosylated and unglycosylated forms(PMID:1637335). In rat macrophages and hepatocytes pro- cathepsin B is 39 kDa (unglycosylated =35 kDa), whereas in human fibroblasts procathepsin B is 44.5-46kDa (unglycosylated=39kDa)(PMID:2097084). It can be detected the 39 kDa form of pro-CTSB, 31 kDa mature forms in mouse brain by western blot.

Storage

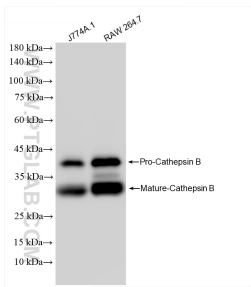
Storage:
Store at -80°C.

Storage Buffer:
PBS only, pH7.3

For technical support and original validation data for this product please contact:
T: 1 (888) 4PTGLAB (1-888-478-4522) (toll free in USA), or 1(312) 455-8498 (outside USA)
E: proteintech@ptglab.com
W: ptglab.com

This product is exclusively available under Proteintech Group brand and is not available to purchase from any other manufacturer.

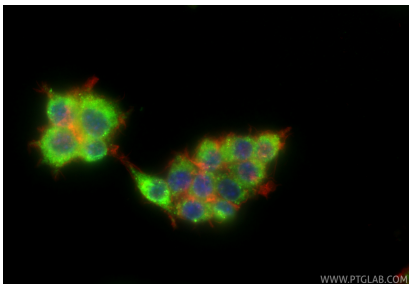
Selected Validation Data



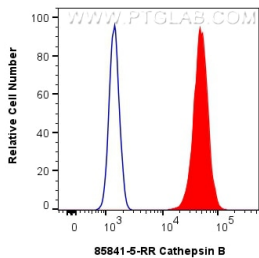
Various lysates were subjected to SDS PAGE followed by western blot with 85841-5-RR (Cathepsin B antibody) at dilution of 1:5000 incubated at room temperature for 1.5 hours. This data was developed using the same antibody clone with 85841-5-PBS in a different storage buffer formulation.

Immunohistochemical analysis of paraffin-embedded mouse brain tissue slide using 85841-5-RR (Cathepsin B antibody) at dilution of 1:1000 (under 10x lens). Heat mediated antigen retrieval with Tris-EDTA buffer (pH 9.0). This data was developed using the same antibody clone with 85841-5-PBS in a different storage buffer formulation.

Immunohistochemical analysis of paraffin-embedded mouse brain tissue slide using 85841-5-RR (Cathepsin B antibody) at dilution of 1:1000 (under 40x lens). Heat mediated antigen retrieval with Tris-EDTA buffer (pH 9.0). This data was developed using the same antibody clone with 85841-5-PBS in a different storage buffer formulation.



Immunofluorescent analysis of (4% PFA) fixed RAW 264.7 cells using Cathepsin B antibody (85841-5-RR, Clone: 243020A5) at dilution of 1:1000 and CoraLite® 488-Conjugated Goat Anti-Rabbit IgG(H+L) (SA00013-2), CL594-Phalloidin (red). This data was developed using the same antibody clone with 85841-5-PBS in a different storage buffer formulation.



1x10⁶ RAW 264.7 cells were intracellularly stained with 0.25 ug Cathepsin B Recombinant antibody (85841-5-RR, Clone:243020A5) and CoraLite® 488-Conjugated Goat Anti-Rabbit IgG(H+L) (SA00013-2)(red), or 0.25 ug Rabbit IgG Isotype Control RecAb (98136-1-RR, Clone: 240953C9) (blue). Cells were fixed with 4% PFA and permeabilized with Flow Cytometry Perm Buffer. This data was developed using the same antibody clone with 85841-5-PBS