

For Research Use Only

Cathepsin B Recombinant monoclonal antibody

Catalog Number: 85841-5-RR



Basic Information

Catalog Number: 85841-5-RR	GenBank Accession Number: NM_007798.3	Purification Method: Protein A purification
Size: 100ul , Concentration: 1000 µg/ml by Nanodrop;	GeneID (NCBI): 13030	CloneNo.: 243020A5
Source: Rabbit	UNIPROT ID: P10605	Recommended Dilutions: WB: 1:2000-1:10000 IHC: 1:500-1:2000 IF/ICC: 1:500-1:2000 FC (Intra): 0.25 ug per 10 ⁶ cells in a 100 µl suspension
Isotype: IgG	Full Name: cathepsin B	
Immunogen Catalog Number: EG3028	Calculated MW: 37 kDa Observed MW: 31 kDa, 39 kDa	

Applications

Tested Applications: WB, IHC, IF/ICC, FC (Intra), ELISA	Positive Controls: WB : J774A.1 cells, mouse brain tissue, RAW 264.7 cells, mouse liver tissue IHC : mouse brain tissue, IF/ICC : RAW 264.7 cells, FC (Intra) : RAW 264.7 cells,
Species Specificity: mouse	
Note-IHC: suggested antigen retrieval with TE buffer pH 9.0; (*) Alternatively, antigen retrieval may be performed with citrate buffer pH 6.0	

Background Information

CTSB(Cathepsin B) is also named as CPSB and belongs to the peptidase C1 family. It participates in intracellular degradation and turnover of proteins. Cathepsin B precursors found in human malignant ascites fluid do not possess mannose-rich carbohydrates suggesting that a defect in the post translational processing of carbohydrate moieties on tumor. Cathepsin B exists as both glycosylated and unglycosylated forms(PMID:1637335). In rat macrophages and hepatocytes pro- cathepsin B is 39 kDa (unglycosylated =35 kDa), whereas in human fibroblasts procathepsin B is 44.5-46kDa (unglycosylated=39kDa)(PMID:2097084). It can be detected the 39 kDa form of pro-CTSB, 31 kDa mature forms in mouse brain by western blot.

Storage

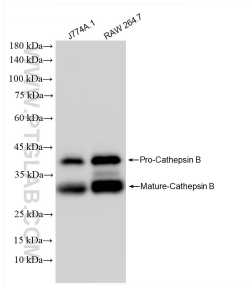
Storage:
Store at -20°C. Stable for one year after shipment.
Storage Buffer:
PBS with 0.02% sodium azide and 50% glycerol, pH7.3
Aliquoting is unnecessary for -20°C storage

*** 20ul sizes contain 0.1% BSA

For technical support and original validation data for this product please contact:
T: 1 (888) 4PTGLAB (1-888-478-4522) (toll free in USA), or 1(312) 455-8498 (outside USA)
E: proteintech@ptglab.com
W: ptglab.com

This product is exclusively available under Proteintech Group brand and is not available to purchase from any other manufacturer.

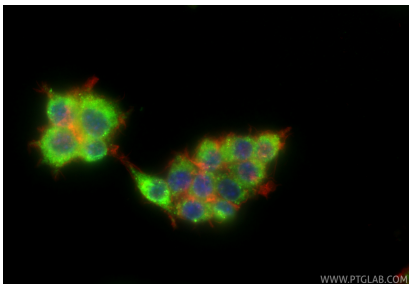
Selected Validation Data



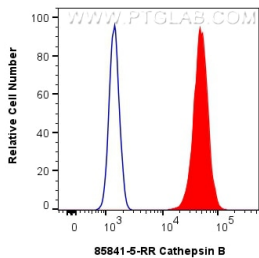
Various lysates were subjected to SDS PAGE followed by western blot with 85841-5-RR (Cathepsin B antibody) at dilution of 1:5000 incubated at room temperature for 1.5 hours.

Immunohistochemical analysis of paraffin-embedded mouse brain tissue slide using 85841-5-RR (Cathepsin B antibody) at dilution of 1:1000 (under 10x lens). Heat mediated antigen retrieval with Tris-EDTA buffer (pH 9.0).

Immunohistochemical analysis of paraffin-embedded mouse brain tissue slide using 85841-5-RR (Cathepsin B antibody) at dilution of 1:1000 (under 40x lens). Heat mediated antigen retrieval with Tris-EDTA buffer (pH 9.0).



Immunofluorescent analysis of (4% PFA) fixed RAW 264.7 cells using Cathepsin B antibody (85841-5-RR, Clone: 243020A5) at dilution of 1:1000 and Coralite® 488-Conjugated Goat Anti-Rabbit IgG(H+L) (SA00013-2), CL594-Phalloidin (red).



1x10⁶ RAW 264.7 cells were intracellularly stained with 0.25 ug Cathepsin B Recombinant antibody (85841-5-RR, Clone:243020A5) and Coralite® 488-Conjugated Goat Anti-Rabbit IgG(H+L) (SA00013-2)(red), or 0.25 ug Rabbit IgG Isotype Control RecAb (98136-1-RR, Clone: 240953C9) (blue). Cells were fixed with 4% PFA and permeabilized with Flow Cytometry Perm Buffer.