

For Research Use Only

ASF1B Recombinant antibody, PBS Only (Detector)

Catalog Number: 85848-1-PBS



Basic Information

Catalog Number: 85848-1-PBS	GenBank Accession Number: BC010014	Purification Method: Protein A purification
Size: 100ug , Concentration: 1 mg/ml by Nanodrop;	GeneID (NCBI): 55723	CloneNo.: 250195A7
Source: Rabbit	UNIPROT ID: Q9NVP2	
Isotype: IgG	Full Name: ASF1 anti-silencing function 1 homolog B (S. cerevisiae)	
Immunogen Catalog Number: AG17763	Calculated MW: 202 aa, 22 kDa	
	Observed MW: 19 kDa	

Applications

Tested Applications:
WB, Cytometric bead array, Indirect ELISA

Species Specificity:
human

Product Information

85848-1-PBS targets ASF1B as part of a matched antibody pair:

MP02155-2: 85848-3-PBS capture and 85848-1-PBS detection (validated in Cytometric bead array)

Unconjugated rabbit recombinant monoclonal antibody in PBS only (BSA and azide free) storage buffer at a concentration of 1 mg/mL, ready for conjugation. Created using Proteintech's proprietary in-house recombinant technology. Recombinant production enables unrivalled batch-to-batch consistency, easy scale-up, and future security of supply.

This conjugation ready format makes antibodies ideal for use in many applications including: ELISAs, multiplex assays requiring matched pairs, mass cytometry, and multiplex imaging applications. Antibody use should be optimized by the end user for each application and assay.

Background Information

ASF1B is a member of the H3/H4 family of histone chaperone proteins and is similar to the anti-silencing function-1 gene in yeast. The encoded protein is the substrate of the tousel-like kinase family of cell cycle-regulated kinases, and may play a key role in modulating the nucleosome structure of chromatin by ensuring a constant supply of histones at sites of nucleosome assembly. This gene encodes a member of the H3/H4 family of histone chaperone proteins and is similar to the anti-silencing function-1 gene in yeast. The encoded protein is the substrate of the tousel-like kinase family of cell cycle-regulated kinases, and may play a key role in modulating the nucleosome structure of chromatin by ensuring a constant supply of histones at sites of nucleosome assembly. This antibody reacts with the ASF1B and ASF1A protein.

Storage

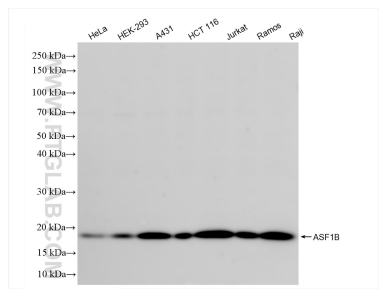
Storage:
Store at -80°C.

Storage Buffer:
PBS only, pH7.3

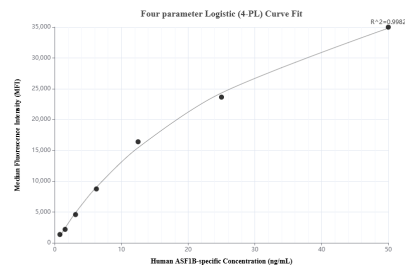
For technical support and original validation data for this product please contact:
T: 1 (888) 4PTGLAB (1-888-478-4522) (toll free in USA), or 1(312) 455-8498 (outside USA)
E: proteintech@ptglab.com
W: ptglab.com

This product is exclusively available under Proteintech Group brand and is not available to purchase from any other manufacturer.

Selected Validation Data



Various lysates were subjected to SDS PAGE followed by western blot with 85848-1-RR (ASF1B antibody) at dilution of 1:10000 incubated at room temperature for 1.5 hours. This data was developed using the same antibody clone with 85848-1-PBS in a different storage buffer formulation.



Cytometric bead array standard curve of MP02155-2, ASF1B-specific Recombinant Matched Antibody Pair, PBS Only. Capture antibody: 85848-3-PBS. Detection antibody: 85848-1-PBS. Standard: Ag17763. Range: 0.781-50 ng/mL.