

For Research Use Only

POLG2 Recombinant antibody

Catalog Number: 85852-4-RR



Basic Information

Catalog Number: 85852-4-RR	GenBank Accession Number: BC009194	Purification Method: Protein A purification
Size: 100ul , Concentration: 1000 µg/ml by Nanodrop;	GeneID (NCBI): 11232	CloneNo.: 250198G10
Source: Rabbit	UNIPROT ID: Q9UHN1	Recommended Dilutions: WB 1:5000-1:50000
Isotype: IgG	Full Name: polymerase (DNA directed), gamma 2, accessory subunit	
Immunogen Catalog Number: AG1424	Calculated MW: 55 kDa	
	Observed MW: 52-55 kDa	

Applications

Tested Applications: WB, ELISA	Positive Controls:
Species Specificity: human, mouse, rat	WB : HeLa cells, H9C2 cells, mouse colon tissue, rat colon tissue, COLO 320 cells, A549 cells

Background Information

by POLG) and an accessory subunit (encoded by POLG2). POLG2(DNA polymerase subunit gamma-2, mitochondrial) can stimulate the polymerase and exonuclease activities (PMID: 37085601). Defects in POLG2 are the cause of progressive external ophthalmoplegia with mitochondrial DNA deletions autosomal dominant type 4 (PEOA4) (PMID: 16685652). Western blot result suggested that the POLG2 expressed in cell lines with a single band of 52-55kd.

Storage

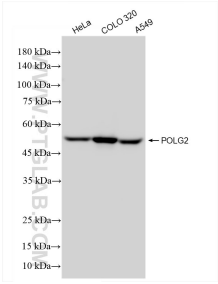
Storage:
Store at -20°C. Stable for one year after shipment.
Storage Buffer:
PBS with 0.02% sodium azide and 50% glycerol, pH7.3
Aliquoting is unnecessary for -20°C storage

*** 20ul sizes contain 0.1% BSA

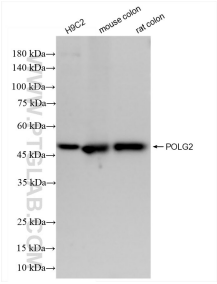
For technical support and original validation data for this product please contact:
T: 1 (888) 4PTGLAB (1-888-478-4522) (toll free in USA), or 1(312) 455-8498 (outside USA)
E: proteintech@ptglab.com
W: ptglab.com

This product is exclusively available under Proteintech Group brand and is not available to purchase from any other manufacturer.

Selected Validation Data



Various lysates were subjected to SDS PAGE followed by western blot with 85852-4-RR (POLG2 antibody) at dilution of 1:10000 incubated at room temperature for 1.5 hours.



Various lysates were subjected to SDS PAGE followed by western blot with 85852-4-RR (POLG2 antibody) at dilution of 1:10000 incubated at room temperature for 1.5 hours.