

For Research Use Only

# DNA-RNA Hybrid Recombinant monoclonal antibody

Catalog Number:85855-1-RR



## Basic Information

Catalog Number:

85855-1-RR

Size:

100ul , Concentration: 1000 ug/ml by Nanodrop;

Source:

Rabbit

Isotype:

IgG

GenBank Accession Number:

GeneID (NCBI):

Full Name:

Purification Method:

Protein A purification

CloneNo.:

250863A1

Recommended Dilutions:

IHC: 1:400-1:1600

IF/ICC: 1:125-1:500

FC (Intra): 0.2 ug per 10<sup>6</sup> cells in a 100 µl suspension

Dot blot: 1:10-1:100

## Applications

Tested Applications:

IHC, IF/ICC, FC (Intra), Dot blot, ELISA

Species Specificity:

n/a

**Note-IHC: suggested antigen retrieval with TE buffer pH 9.0; (\*) Alternatively, antigen retrieval may be performed with citrate buffer pH 6.0**

Positive Controls:

IHC : human placenta tissue, human ovary tumor tissue, human tonsillitis tissue

IF/ICC : HepG2 cells, HeLa cells

FC (Intra) : HEK-293T cells,

Dot blot: / /,

## Background Information

DNA-RNA Hybrid antibodies are primarily used to study R-loops. Theoretically, they do not bind to single-stranded DNA, double-stranded DNA, or RNA. R-loops are DNA-RNA hybrid structures formed during transcription and are closely related to genome stability, DNA replication, DNA repair, and cancer development.

## Storage

Storage:

Store at -20°C. Stable for one year after shipment.

Storage Buffer:

PBS with 0.02% sodium azide and 50% glycerol, pH7.3

Aliquoting is unnecessary for -20°C storage

\*\*\* 20ul sizes contain 0.1% BSA

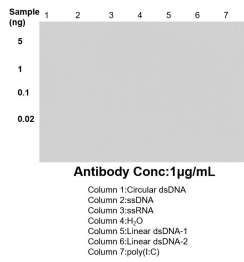
For technical support and original validation data for this product please contact:

T: 1 (888) 4PTGLAB (1-888-478-4522) (toll free in USA), or 1(312) 455-8498 (outside USA)

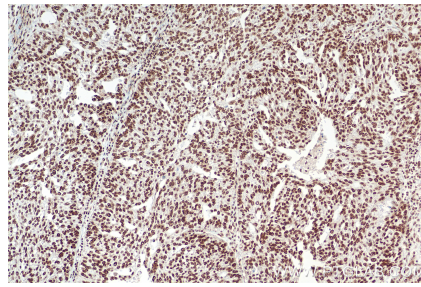
E: proteintech@ptglab.com  
W: ptglab.com

This product is exclusively available under Proteintech Group brand and is not available to purchase from any other manufacturer.

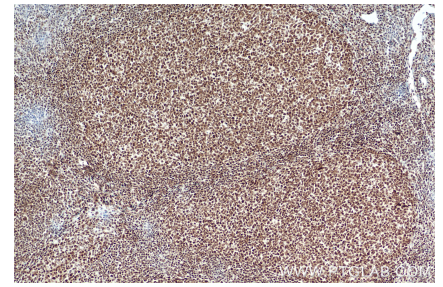
## Selected Validation Data



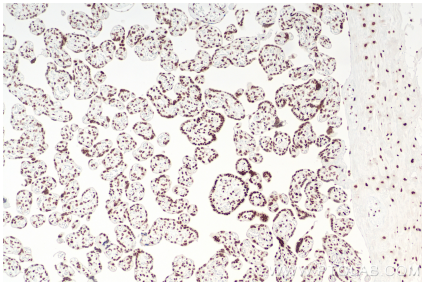
Dot blot analysis was used to confirm the specificity of 85855-1-RR DNA-RNA Hybrid antibody. peptides were spotted onto NC and probed with antibody at 1 µg/mL. The amount of peptide (ng) spotted is indicated next to each row.



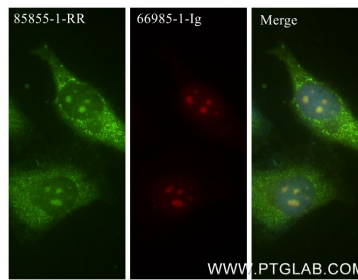
Immunohistochemical analysis of paraffin-embedded human ovary tumor tissue slide using 85855-1-RR (DNA-RNA Hybrid antibody) at dilution of 1:800 (under 10x lens). Heat mediated antigen retrieval with Tris-EDTA buffer (pH 9.0).



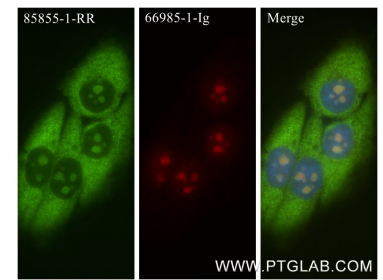
Immunohistochemical analysis of paraffin-embedded human tonsillitis tissue slide using 85855-1-RR (DNA-RNA Hybrid antibody) at dilution of 1:800 (under 10x lens). Heat mediated antigen retrieval with Tris-EDTA buffer (pH 9.0).



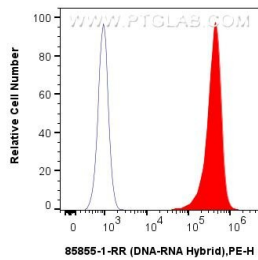
Immunohistochemical analysis of paraffin-embedded human placenta tissue slide using 85855-1-RR (DNA-RNA Hybrid antibody) at dilution of 1:800 (under 10x lens). Heat mediated antigen retrieval with Tris-EDTA buffer (pH 9.0).



Immunofluorescent analysis of (4% PFA) fixed HeLa cells using DNA-RNA Hybrid antibody (85855-1-RR, Clone: 250863A1) at dilution of 1:250 and CoraLite® 488-Conjugated Goat Anti-Rabbit IgG(H+L) (SA00013-2), FBL antibody (66985-1-Ig, Clone: 3A9E8, red).



Immunofluorescent analysis of (4% PFA) fixed HepG2 cells using DNA-RNA Hybrid antibody (85855-1-RR, Clone: 250863A1) at dilution of 1:250 and CoraLite® 488-Conjugated Goat Anti-Rabbit IgG(H+L) (SA00013-2), FBL antibody (66985-1-Ig, Clone: 3A9E8, red).



1x10<sup>6</sup> HEK-293T cells were intracellularly stained with 0.2 µg N/a DNA-RNA Hybrid Recombinant Antibody (85855-1-RR, Clone: 250863A1) and PE-Conjugated Goat Anti-Rabbit IgG(H+L)(red), or 0.2 µg Rabbit IgG Isotype Control RecAb (98136-1-RR, Clone: 240953C9) (blue). Cells were fixed and permeabilized with True-Nuclear Transcription Factor Buffer Set.