

For Research Use Only

PAEP Recombinant antibody, PBS Only (Capture)

Catalog Number: 85856-5-PBS



Basic Information

Catalog Number: 85856-5-PBS	GenBank Accession Number: NM_002571.4	Purification Method: Protein A purification
Size: 100ug, Concentration: 1 mg/ml by Nanodrop;	GeneID (NCBI): 5047	CloneNo.: 250206B5
Source: Rabbit	UNIPROT ID: P09466-1	
Isotype: IgG	Full Name: progesterone-associated endometrial protein	
Immunogen Catalog Number: EG3037	Calculated MW: 21 kDa	

Applications

Tested Applications:
Sandwich ELISA, Indirect ELISA, Sample test

Species Specificity:
human

Product Information

85856-5-PBS targets PAEP as part of a matched antibody pair:

MP02170-3: 85856-5-PBS capture and 85856-4-PBS detection (validated in Sandwich ELISA)

Unconjugated rabbit recombinant monoclonal antibody in PBS only (BSA and azide free) storage buffer at a concentration of 1 mg/mL, ready for conjugation. Created using Proteintech's proprietary in-house recombinant technology. Recombinant production enables unrivalled batch-to-batch consistency, easy scale-up, and future security of supply.

This conjugation ready format makes antibodies ideal for use in many applications including: ELISAs, multiplex assays requiring matched pairs, mass cytometry, and multiplex imaging applications. Antibody use should be optimized by the end user for each application and assay.

Storage

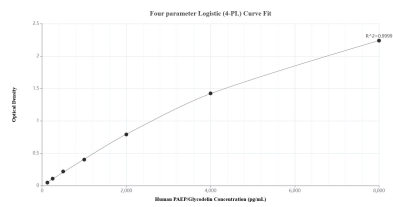
Storage:
Store at -80°C.

Storage Buffer:
PBS only, pH7.3

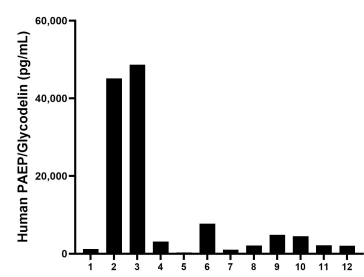
For technical support and original validation data for this product please contact:
T: 1 (888) 4PTGLAB (1-888-478-4522) (toll free in USA), or 1(312) 455-8498 (outside USA)
E: proteintech@ptglab.com
W: ptglab.com

This product is exclusively available under Proteintech Group brand and is not available to purchase from any other manufacturer.

Selected Validation Data



Sandwich ELISA standard curve of MP02170-3, Human PAEP/Glycodelin Recombinant Matched Antibody Pair - PBS only. 85856-5-PBS was coated to a plate as the capture antibody and incubated with serial dilutions of standard Eg3037. 85856-4-PBS was HRP conjugated as the detection antibody. Range: 125-8000 pg/mL



Serum of twelve individual healthy human donors was measured. The PAEP/Glycodelin concentration of detected samples was determined to be 10,251.8 pg/mL with a range of 330.7-48,667.8 pg/mL