

For Research Use Only

# ACTN2 Recombinant antibody

Catalog Number: 85857-4-RR



## Basic Information

Catalog Number:

85857-4-RR

Size:

100ul, Concentration: 1000 µg/ml by  
Nanodrop;

Source:

Rabbit

Isotype:

IgG

Immunogen Catalog Number:

AG5459

GenBank Accession Number:

BC051770

GeneID (NCBI):

88

UNIPROT ID:

P35609

Full Name:

actinin, alpha 2

Calculated MW:

104 kDa

Observed MW:

103 kDa

Purification Method:

Protein A purification

CloneNo.:

250229F6

Recommended Dilutions:

WB 1:5000-1:50000

## Applications

Tested Applications:

WB, ELISA

Species Specificity:

human, mouse, rat

Positive Controls:

WB : HepG2 cells, A549 cells, HeLa cells, NIH/3T3 cells,  
C6 cells

## Background Information

Alpha actinin 2 (ACTN2) belongs to the alpha-actinin family and is expressed in both skeletal and cardiac muscles, and functions to anchor myofibrillar actin thin filaments and titin to Z-discs (PMID: 30701273). ACTN2 is an actin-binding protein with multiple roles in different cell types. In nonmuscle cells, the cytoskeletal isoform is found along microfilament bundles and adherens-type junctions, where it is involved in binding actin to the membrane. In contrast, skeletal, cardiac, and smooth muscle isoforms are localized to the Z disc and analogous dense bodies, where they help anchor the myofibrillar actin filaments. Mutations in ACTN2 are associated with hypertrophic cardiomyopathy, as well as dilated cardiomyopathy and endocardial fibroelastosis (PMID: 20022194, 14567970).

## Storage

Storage:

Store at -20°C. Stable for one year after shipment.

Storage Buffer:

PBS with 0.02% sodium azide and 50% glycerol, pH7.3

Aliquoting is unnecessary for -20°C storage

\*\*\* 20ul sizes contain 0.1% BSA

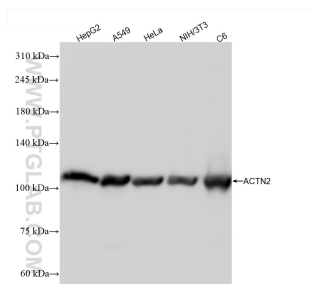
For technical support and original validation data for this product please contact:

T: 1 (888) 4PTGLAB (1-888-478-4522) (toll free  
in USA), or 1(312) 455-8498 (outside USA)

E: [proteintech@ptglab.com](mailto:proteintech@ptglab.com)  
W: [ptglab.com](http://ptglab.com)

This product is exclusively available under Proteintech Group brand and is not available to purchase from any other manufacturer.

## Selected Validation Data



Various lysates were subjected to SDS PAGE followed by western blot with 85857-4-RR (ACTN2 antibody) at dilution of 1:10000 incubated at room temperature for 1.5 hours.