

For Research Use Only

# CCL19/MIP-3 beta Recombinant monoclonal antibody

Catalog Number:85861-1-RR



## Basic Information

<b>Catalog Number:</b> 85861-1-RR	<b>GenBank Accession Number:</b> NM_011888.2	<b>Purification Method:</b> Protein A purification
<b>Size:</b> 100ul , Concentration: 1000 µg/ml by Nanodrop;	<b>GeneID (NCBI):</b> 24047	<b>CloneNo.:</b> 242867C1
<b>Source:</b> Rabbit	<b>UNIPROT ID:</b> O70460	<b>Recommended Dilutions:</b> WB: 1:2000-1:10000 IHC: 1:500-1:2000
<b>Isotype:</b> IgG	<b>Full Name:</b> chemokine (C-C motif) ligand 19	
<b>Immunogen Catalog Number:</b> EG3124	<b>Calculated MW:</b> 12 kDa	

## Applications

**Tested Applications:**  
WB, IHC, ELISA

**Species Specificity:**  
mouse

### Positive Controls:

**WB :** Recombinant protein, Transfected with Mouse Ccl19 Transfected HEK-293T cells

**IHC :** mouse spleen tissue,

**Note-IHC: suggested antigen retrieval with TE buffer pH 9.0; (\*) Alternatively, antigen retrieval may be performed with citrate buffer pH 6.0**

## Background Information

CCL19, also known as MIP-3 $\beta$ , is one of several CC cytokine genes clustered on the p-arm of chromosome 9. CCL19 may play a role in normal lymphocyte recirculation and homing. It also plays an important role in trafficking of T cells in thymus, and in T cell and B cell migration to secondary lymphoid organs. It specifically binds to chemokine receptor CCR7.

## Storage

**Storage:**  
Store at -20°C. Stable for one year after shipment.

**Storage Buffer:**  
PBS with 0.02% sodium azide and 50% glycerol, pH7.3

Aliquoting is unnecessary for -20°C storage

\*\*\* 20ul sizes contain 0.1% BSA

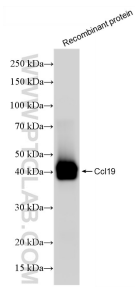
For technical support and original validation data for this product please contact:

T: 1 (888) 4PTGLAB (1-888-478-4522) (toll free in USA), or 1(312) 455-8498 (outside USA)

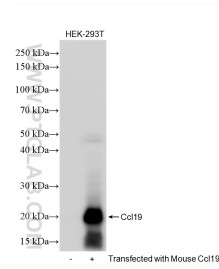
E: [proteintech@ptglab.com](mailto:proteintech@ptglab.com)  
W: [ptglab.com](http://ptglab.com)

**This product is exclusively available under Proteintech Group brand and is not available to purchase from any other manufacturer.**

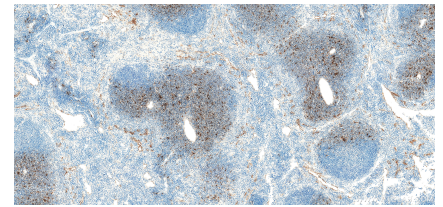
## Selected Validation Data



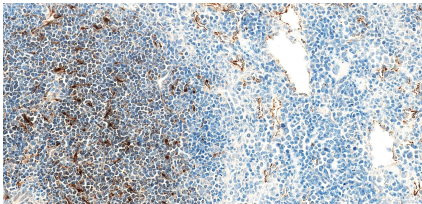
Mouse CCL19 Recombinant protein were subjected to SDS PAGE followed by western blot with 85861-1-RR (Ccl19 antibody) at dilution of 1:5000 incubated at room temperature for 1.5 hours.



Various lysates were subjected to SDS PAGE followed by western blot with 85861-1-RR (Ccl19 antibody) at dilution of 1:5000 incubated at room temperature for 1.5 hours.



Immunohistochemical analysis of paraffin-embedded mouse spleen tissue slide using 85861-1-RR (CCL19/MIP-3 beta antibody) at dilution of 1:1000 (under 10x lens). Heat mediated antigen retrieval with Tris-EDTA buffer (pH 9.0).



Immunohistochemical analysis of paraffin-embedded mouse spleen tissue slide using 85861-1-RR (CCL19/MIP-3 beta antibody) at dilution of 1:1000 (under 40x lens). Heat mediated antigen retrieval with Tris-EDTA buffer (pH 9.0).