

For Research Use Only

Mouse Ccl19 Recombinant antibody, PBS Only (Capture)

Catalog Number: 85861-3-PBS



Basic Information

Catalog Number: 85861-3-PBS	GenBank Accession Number: NM_011888.2	Purification Method: Protein A purification
Size: 100ug , Concentration: 1 mg/ml by Nanodrop;	GeneID (NCBI): 24047	CloneNo.: 242867E7
Source: Rabbit	UNIPROT ID: O70460	
Isotype: IgG	Full Name: chemokine (C-C motif) ligand 19	
Immunogen Catalog Number: EG3124	Calculated MW: 12 kDa	

Applications

Tested Applications:
Cytometric bead array, Sandwich ELISA, Indirect ELISA, Sample test

Species Specificity:
mouse

Product Information

85861-3-PBS targets Ccl19 as part of a matched antibody pair:

MP02165-1: 85861-3-PBS capture and 85861-1-PBS detection (validated in Cytometric bead array, Sandwich ELISA)

MP02165-2: 85861-3-PBS capture and 85861-2-PBS detection (validated in Cytometric bead array)

Unconjugated rabbit recombinant monoclonal antibody in PBS only (BSA and azide free) storage buffer at a concentration of 1 mg/mL, ready for conjugation. Created using Proteintech's proprietary in-house recombinant technology. Recombinant production enables unrivalled batch-to-batch consistency, easy scale-up, and future security of supply.

This conjugation ready format makes antibodies ideal for use in many applications including: ELISAs, multiplex assays requiring matched pairs, mass cytometry, and multiplex imaging applications. Antibody use should be optimized by the end user for each application and assay.

Storage

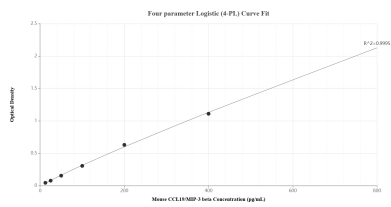
Storage:
Store at -80°C.

Storage Buffer:
PBS only, pH7.3

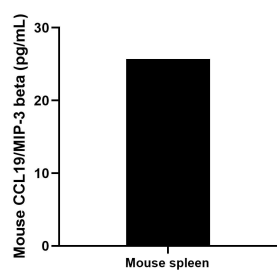
For technical support and original validation data for this product please contact:
T: 1 (888) 4PTGLAB (1-888-478-4522) (toll free in USA), or 1(312) 455-8498 (outside USA)
E: proteintech@ptglab.com
W: ptglab.com

This product is exclusively available under Proteintech Group brand and is not available to purchase from any other manufacturer.

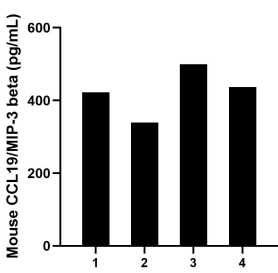
Selected Validation Data



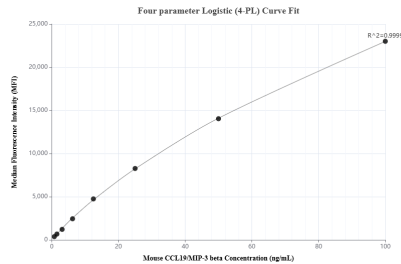
Sandwich ELISA standard curve of MP02165-1, Mouse CCL19/MIP-3 beta Recombinant Matched Antibody Pair - PBS only. 85861-3-PBS was coated to a plate as the capture antibody and incubated with serial dilutions of standard Eg3124. 85861-1-PBS was HRP conjugated as the detection antibody. Range: 12.5-800 pg/mL



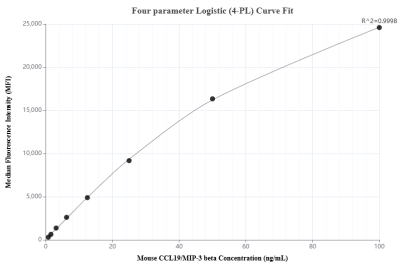
Mouse spleen tissue was removed, rinsed in 1x PBS, and kept on ice. The tissue was then homogenized using a tissue homogenizer and seeded into media containing RPMI 1640 supplemented with 10% fetal bovine serum, 2 mM L-glutamine, 100 U/mL penicillin, and 100 mg/mL streptomycin sulfate. Cells were cultured for 3 days. Aliquots of the cell culture supernatants were removed and assayed for levels of mouse CCL19/MIP-3 beta, and measured 25.7 pg/mL



Serum of four mice was measured. The CCL19/MIP-3 beta concentration of detected samples was determined to be 424.5 pg/mL with a range of 338.8-499.6 pg/mL



Cytometric bead array standard curve of MP02165-2, MOUSE CCL19/MIP-3 beta Recombinant Matched Antibody Pair, PBS Only. Capture antibody: 85861-3-PBS. Detection antibody: 85861-2-PBS. Standard: Eg3124. Range: 0.781-100 ng/mL



Cytometric bead array standard curve of MP02165-1, MOUSE CCL19/MIP-3 beta Recombinant Matched Antibody Pair, PBS Only. Capture antibody: 85861-3-PBS. Detection antibody: 85861-1-PBS. Standard: Eg3124. Range: 0.781-100 ng/mL