

For Research Use Only

# Cryptochrome 2 Recombinant monoclonal antibody, PBS Only

Catalog Number: 85866-1-PBS



## Basic Information

<b>Catalog Number:</b> 85866-1-PBS	<b>GenBank Accession Number:</b> BC041814	<b>Purification Method:</b> Protein A purification
<b>Size:</b> 100ug , Concentration: 1 mg/ml by Nanodrop;	<b>GeneID (NCBI):</b> 1408	<b>CloneNo.:</b> 250166A8
<b>Source:</b> Rabbit	<b>UNIPROT ID:</b> Q49AN0	
<b>Isotype:</b> IgG	<b>Full Name:</b> cryptochrome 2 (photolyase-like)	
<b>Immunogen Catalog Number:</b> AG38484	<b>Calculated MW:</b> 593 aa, 67 kDa	
	<b>Observed MW:</b> 65-70 kDa	

## Applications

**Tested Applications:**  
WB, IP, Indirect ELISA

**Species Specificity:**  
human, mouse

## Background Information

Cryptochrome circadian clock 2 (CRY2) is a flavin adenine dinucleotide-binding protein that is a key component of the circadian core oscillator complex, which regulates the circadian clock. Loss of CRY2 stabilizes c-MYC and enhances cellular transformation. CRY2 can function as a co-factor for the SCF substrate adaptor FBXL3 (PMID: 27840026).

## Storage

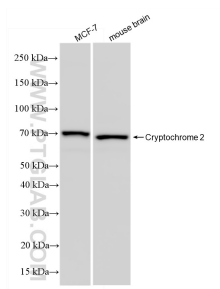
**Storage:**  
Store at -80°C.

**Storage Buffer:**  
PBS only, pH7.3

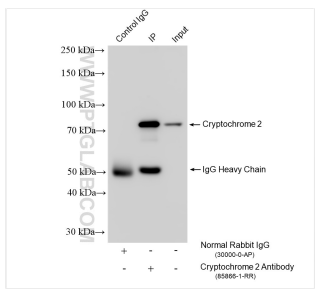
For technical support and original validation data for this product please contact:  
T: 1 (888) 4PTGLAB (1-888-478-4522) (toll free in USA), or 1(312) 455-8498 (outside USA)  
E: [proteintech@ptglab.com](mailto:proteintech@ptglab.com)  
W: [ptglab.com](http://ptglab.com)

This product is exclusively available under Proteintech Group brand and is not available to purchase from any other manufacturer.

## Selected Validation Data



Various lysates were subjected to SDS PAGE followed by western blot with 85866-1-RR (Cryptochrome 2 antibody) at dilution of 1:6000 incubated at room temperature for 1.5 hours. This data was developed using the same antibody clone with 85866-1-PBS in a different storage buffer formulation.



IP result of anti-Cryptochrome 2 (IP:85866-1-RR, 4ug; Detection:85866-1-RR 1:2000) with mouse brain tissue lysate 1720 ug. This data was developed using the same antibody clone with 85866-1-PBS in a different storage buffer formulation.