

For Research Use Only

Mouse B2m Recombinant antibody, PBS Only (Detector)

Catalog Number: 85871-5-PBS



Basic Information

| | | |
|--|---|---|
| Catalog Number: 85871-5-PBS | GenBank Accession Number: NM_009735.3 | Purification Method: Protein A purification |
| Size: 100ug, Concentration: 1 mg/ml by Nanodrop; | GeneID (NCBI): 12010 | CloneNo.: 250172D4 |
| Source: Rabbit | UNIPROT ID: P01887 | |
| Isotype: IgG | Full Name: beta-2 microglobulin | |
| Immunogen Catalog Number: EG3086 | Calculated MW: 14 kDa | |

Applications

Tested Applications:
Sandwich ELISA, Indirect ELISA, Sample test

Species Specificity:
mouse

Product Information

85871-5-PBS targets B2m as part of a matched antibody pair.

MP02174-3: 98442-2-PBS capture and 85871-5-PBS detection (validated in Sandwich ELISA)

Unconjugated rabbit recombinant monoclonal antibody in PBS only (BSA and azide free) storage buffer at a concentration of 1 mg/mL, ready for conjugation. Created using Proteintech's proprietary in-house recombinant technology. Recombinant production enables unrivalled batch-to-batch consistency, easy scale-up, and future security of supply.

This conjugation ready format makes antibodies ideal for use in many applications including: ELISAs, multiplex assays requiring matched pairs, mass cytometry, and multiplex imaging applications. Antibody use should be optimized by the end user for each application and assay.

Storage

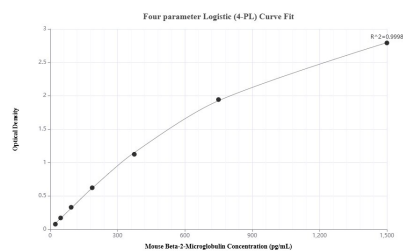
Storage:
Store at -80°C.

Storage Buffer:
PBS only, pH7.3

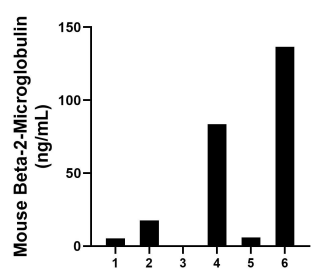
For technical support and original validation data for this product please contact:
T: 1 (888) 4PTGLAB (1-888-478-4522) (toll free in USA), or 1(312) 455-8498 (outside USA)
E: proteintech@ptglab.com
W: ptglab.com

This product is exclusively available under Proteintech Group brand and is not available to purchase from any other manufacturer.

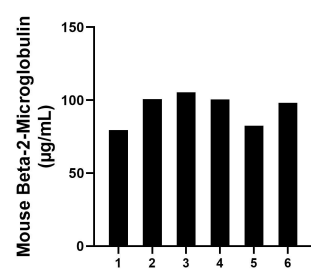
Selected Validation Data



Sandwich ELISA standard curve of MP02174-3, Mouse Beta-2-Microglobulin Recombinant Matched Antibody Pair - PBS only. 98442-2-PBS was coated to a plate as the capture antibody and incubated with serial dilutions of standard Eg3086. 85871-5-PBS was HRP conjugated as the detection antibody. Range: 23.438-1500 pg/mL



Urine of six mice was measured. The mouse Beta-2-Microglobulin concentration of detected samples was determined to be 49.78 ng/mL with a range of ND - 136.66 ng/mL



Serum of six mice was measured. The mouse Beta-2-Microglobulin concentration of detected samples was determined to be 94.41 µg/mL with a range of 79.57 - 105.38 µg/mL