

For Research Use Only

Mouse Beta-2-Microglobulin Recombinant antibody, PBS Only (Capture)

Catalog Number: 85871-6-PBS



Basic Information

Catalog Number: 85871-6-PBS	GenBank Accession Number: NM_009735.3	Purification Method: Protein A purification
Size: 100ug , Concentration: 1 mg/ml by Nanodrop;	GeneID (NCBI): 12010	CloneNo.: 250172F11
Source: Rabbit	UNIPROT ID: P01887	
Isotype: IgG	Full Name: beta-2 microglobulin	
Immunogen Catalog Number: EG3086	Calculated MW: 14 kDa	

Applications

Tested Applications:
Sandwich ELISA, Indirect ELISA, Sample test

Species Specificity:
mouse

Product Information

85871-6-PBS targets Beta-2-Microglobulin as part of a matched antibody pair:

MP02174-3: 85871-6-PBS capture and 85871-5-PBS detection (validated in Sandwich ELISA)

Unconjugated rabbit recombinant monoclonal antibody in PBS only (BSA and azide free) storage buffer at a concentration of 1 mg/mL, ready for conjugation. Created using Proteintech's proprietary in-house recombinant technology. Recombinant production enables unrivalled batch-to-batch consistency, easy scale-up, and future security of supply.

This conjugation ready format makes antibodies ideal for use in many applications including: ELISAs, multiplex assays requiring matched pairs, mass cytometry, and multiplex imaging applications. Antibody use should be optimized by the end user for each application and assay.

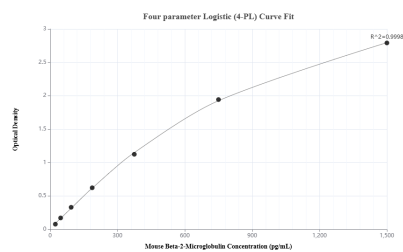
Storage

Storage:
Store at -80°C.
Storage Buffer:
PBS only, pH7.3

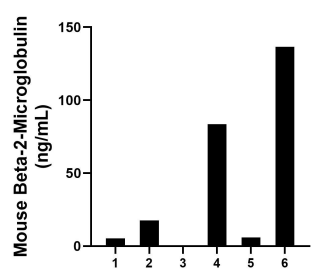
For technical support and original validation data for this product please contact:
T: 1 (888) 4PTGLAB (1-888-478-4522) (toll free in USA), or 1(312) 455-8498 (outside USA)
E: proteintech@ptglab.com
W: ptglab.com

This product is exclusively available under Proteintech Group brand and is not available to purchase from any other manufacturer.

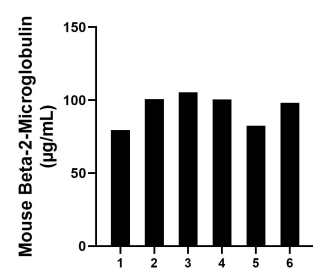
Selected Validation Data



Sandwich ELISA standard curve of MP02174-3, Mouse Beta-2-Microglobulin Recombinant Matched Antibody Pair - PBS only. 98442-2-PBS was coated to a plate as the capture antibody and incubated with serial dilutions of standard Eg3086. 85871-5-PBS was HRP conjugated as the detection antibody. Range: 23.438-1500 pg/mL



Urine of six mice was measured. The mouse Beta-2-Microglobulin concentration of detected samples was determined to be 49.78 ng/mL with a range of ND - 136.66 ng/mL



Serum of six mice was measured. The mouse Beta-2-Microglobulin concentration of detected samples was determined to be 94.41 µg/mL with a range of 79.57 - 105.38 µg/mL