

For Research Use Only

MGL2 Recombinant antibody

Catalog Number: 85876-1-RR



Basic Information

Catalog Number:

85876-1-RR

Size:

100ul, Concentration: 1000 µg/ml by
Nanodrop;

Source:

Rabbit

Isotype:

IgG

Immunogen Catalog Number:

EG2727

GenBank Accession Number:

NM_145137.2

GeneID (NCBI):

216864

UNIPROT ID:

Q8JZN1

Full Name:

macrophage galactose N-acetyl-
galactosamine specific lectin 2

Calculated MW:

38 kDa

Observed MW:

40 kDa

Purification Method:

Protein A purification

CloneNo.:

242983C6

Recommended Dilutions:

WB 1:5000-1:50000

Applications

Tested Applications:

WB, ELISA

Species Specificity:

mouse

Positive Controls:

WB : RAW 264.7 cells, Recombinant protein, mouse
skin tissue

Background Information

MGL2 is mainly expressed on immature dendritic cell (DCs), tolerogenic DCs, type 2 DCs, and alternatively activated macrophages. MGL2 protein has carbohydrate-binding activity, specifically recognizing and binding to terminal GalNAc (n-acetyl 2-amino-2-deoxy-D-galactopyranose) residues, including the TN antigen (Galnac-athrer). This specific binding makes it play an important role in the recognition and processing of glycosylated pathogens, apoptotic cell fragments and tumor cells.

Storage

Storage:

Store at -20°C. Stable for one year after shipment.

Storage Buffer:

PBS with 0.02% sodium azide and 50% glycerol, pH7.3

Aliquoting is unnecessary for -20°C storage

*** 20ul sizes contain 0.1% BSA

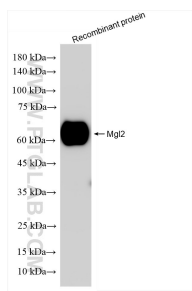
For technical support and original validation data for this product please contact:

T: 1 (888) 4PTGLAB (1-888-478-4522) (toll free
in USA), or 1(312) 455-8498 (outside USA)

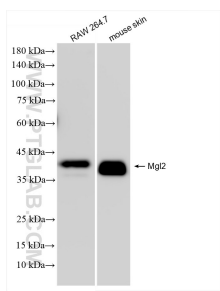
E: proteintech@ptglab.com
W: ptglab.com

This product is exclusively available under Proteintech Group brand and is not available to purchase from any other manufacturer.

Selected Validation Data



Various lysates were subjected to SDS PAGE followed by western blot with 85876-1-RR (Mgl2 antibody) at dilution of 1:10000 incubated at room temperature for 1.5 hours.



Various lysates were subjected to SDS PAGE followed by western blot with 85876-1-RR (Mgl2 antibody) at dilution of 1:10000 incubated at room temperature for 1.5 hours.