

For Research Use Only

GLUT5 Recombinant antibody, PBS Only

Catalog Number: 85878-1-PBS



Basic Information

Catalog Number:

85878-1-PBS

Size:

100ug, Concentration: 1 mg/ml by Nanodrop;

Source:

Rabbit

Isotype:

IgG

Immunogen Catalog Number:

AG26091

GenBank Accession Number:

BC001820

GeneID (NCBI):

6518

UNIPROT ID:

P22732

Full Name:

solute carrier family 2 (facilitated glucose/fructose transporter), member 5

Calculated MW:

55 kDa

Observed MW:

55 kDa

Purification Method:

Protein A purification

CloneNo.:

250150F11

Applications

Tested Applications:

WB, Indirect ELISA

Species Specificity:

human

Background Information

GLUT5, also known as SLC2A5, is a fructose transporter expressed on the apical border of enterocytes in the small intestine. GLUT5 allows for fructose to be transported from the intestinal lumen into the enterocyte by facilitated diffusion due to fructose's high concentration in the intestinal lumen (PMID: 12750891). GLUT5 is also expressed in skeletal muscle, testis, kidney, fat tissue (adipocytes), and brain (PMID: 9781312, 18398011).

Storage

Storage:

Store at -80°C.

Storage Buffer:

PBS only, pH7.3

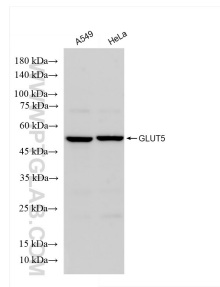
For technical support and original validation data for this product please contact:

T: 1 (888) 4PTGLAB (1-888-478-4522) (toll free in USA), or 1(312) 455-8498 (outside USA)

E: proteintech@ptglab.com
W: ptglab.com

This product is exclusively available under Proteintech Group brand and is not available to purchase from any other manufacturer.

Selected Validation Data



Various lysates were subjected to SDS PAGE followed by western blot with 85878-1-RR (GLUT5 antibody) at dilution of 1:5000 incubated at room temperature for 1.5 hours. This data was developed using the same antibody clone with 85878-1-PBS in a different storage buffer formulation.