

For Research Use Only

Mouse TIMP2 Recombinant antibody, PBS Only (Capture/Detector)

Catalog Number: 85882-2-PBS



Basic Information

Catalog Number: 85882-2-PBS	GenBank Accession Number: uniprot NM	Purification Method: Protein A purification
Size: 100ug , Concentration: 1 mg/ml by Nanodrop;	GeneID (NCBI): 21858	CloneNo.: 25023188
Source: Rabbit	UNIPROT ID: P25785	
Isotype: IgG	Full Name: tissue inhibitor of metalloproteinase 2	
Immunogen Catalog Number: EG2960	Calculated MW: 24 kDa	
	Observed MW: 20-24 kDa	

Applications

Tested Applications:
WB, Cytometric bead array, Sandwich ELISA, Indirect ELISA, Sample test

Species Specificity:
human, mouse, rat

Product Information

85882-2-PBS targets TIMP2 as part of a matched antibody pair:

MP02176-1: 85882-2-PBS capture and 85882-1-PBS detection (validated in Cytometric bead array)

MP02176-2: 85882-3-PBS capture and 85882-2-PBS detection (validated in Cytometric bead array)

MP02176-3: 85882-4-PBS capture and 85882-2-PBS detection (validated in Sandwich ELISA)

Unconjugated rabbit recombinant monoclonal antibody in PBS only (BSA and azide free) storage buffer at a concentration of 1 mg/mL, ready for conjugation. Created using Proteintech's proprietary in-house recombinant technology. Recombinant production enables unrivalled batch-to-batch consistency, easy scale-up, and future security of supply.

This conjugation ready format makes antibodies ideal for use in many applications including: ELISAs, multiplex assays requiring matched pairs, mass cytometry, and multiplex imaging applications. Antibody use should be optimized by the end user for each application and assay.

Background Information

The TIMPs are natural highly specific endogenous inhibitors of MMPs. Human TIMP family consists of four 21-28 kDa proteins known as TIMP1, TIMP2, TIMP3, and TIMP4 encoded by four paralogous genes. TIMPs are vital to the maintenance of ECM homeostasis primarily through their MMP inhibitory functions. TIMP2, a member of the TIMP family, regulates the proteolytic activity of all MMPs and is involved in cell differentiation, growth, migration, angiogenesis, and apoptosis. Urinary TIMP2 has been recently recognized as an early biomarker to predict Acute kidney injury (AKI) in critically ill patients.

Storage

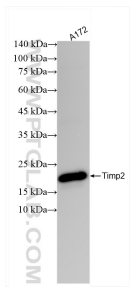
Storage:
Store at -80°C.

Storage Buffer:
PBS only, pH7.3

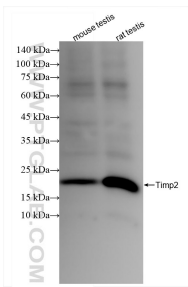
For technical support and original validation data for this product please contact:
T: 1 (888) 4PTGLAB (1-888-478-4522) (toll free in USA), or 1(312) 455-8498 (outside USA)
E: proteintech@ptglab.com
W: ptglab.com

This product is exclusively available under Proteintech Group brand and is not available to purchase from any other manufacturer.

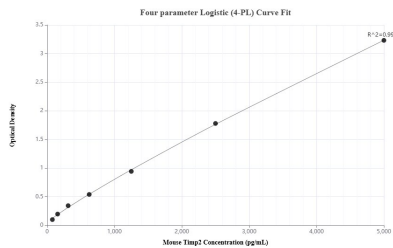
Selected Validation Data



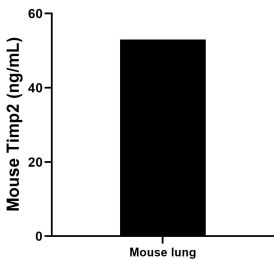
A172 cells were subjected to SDS PAGE followed by western blot with 85882-2-RR (Timp2 antibody) at dilution of 1:3000 incubated at room temperature for 1.5 hours. This data was developed using the same antibody clone with 85882-2-PBS in a different storage buffer formulation.



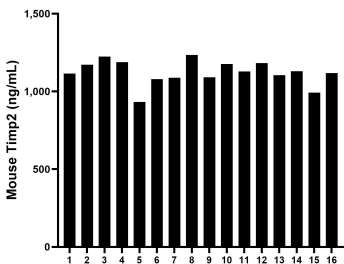
Various lysates were subjected to SDS PAGE followed by western blot with 85882-2-RR (Timp2 antibody) at dilution of 1:3000 incubated at room temperature for 1.5 hours. This data was developed using the same antibody clone with 85882-2-PBS in a different storage buffer formulation.



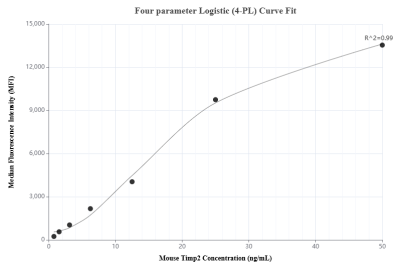
Sandwich ELISA standard curve of MP02176-3, Mouse Timp2 Recombinant Matched Antibody Pair - PBS only. 85882-4-PBS was coated to a plate as the capture antibody and incubated with serial dilutions of standard Eg2960. 85882-2-PBS was HRP conjugated as the detection antibody. Range: 78.1-5000 pg/mL



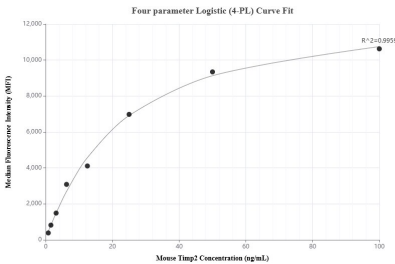
Mouse lung tissue (3 lungs in 1-2 mm pieces in 100 mL of medium) was cultured for 5 days in RPMI supplemented with 10% fetal bovine serum, 5 μ M β -mercaptoethanol, 2 mM L-glutamine, 100 U/mL penicillin, and 100 μ g/mL streptomycin sulfate. An aliquot of the cell culture supernate was removed, assayed for mouse Timp2, and measured 53.04 ng/mL.



Serum of sixteen mice was measured. The mouse Timp2 concentration of detected samples was determined to be 1,122.15 ng/mL with a range of 933.30 - 1,234.19 ng/mL.



Cytometric bead array standard curve of MP02176-2, MOUSE Timp2 Recombinant Matched Antibody Pair, PBS Only. Capture antibody: 85882-3-PBS. Detection antibody: 85882-2-PBS. Standard: Eg2960. Range: 0.781-50 ng/mL



Cytometric bead array standard curve of MP02176-1, MOUSE Timp2 Recombinant Matched Antibody Pair, PBS Only. Capture antibody: 85882-2-PBS. Detection antibody: 85882-1-PBS. Standard: Eg2960. Range: 0.781-100 ng/mL