

For Research Use Only

LGALS3BP Recombinant antibody, PBS Only (Detector)

Catalog Number: 85883-6-PBS



Basic Information

| | | |
|---|--|---|
| Catalog Number: 85883-6-PBS | GenBank Accession Number: NM_005567 | Purification Method: Protein A purification |
| Size: 100ug , Concentration: 1 mg/ml by Nanodrop; | GeneID (NCBI): 3959 | CloneNo.: 250138A7 |
| Source: Rabbit | UNIPROT ID: Q08380 | |
| Isotype: IgG | Full Name: lectin, galactoside-binding, soluble, 3 binding protein | |
| Immunogen Catalog Number: EG3302 | Calculated MW: 585 aa, 65 kDa | |

Applications

Tested Applications:
Sandwich ELISA, Indirect ELISA, Sample test

Species Specificity:
human

Product Information

85883-6-PBS targets LGALS3BP as part of a matched antibody pair:

MP02172-3: 85883-7-PBS capture and 85883-6-PBS detection (validated in Sandwich ELISA)

Unconjugated rabbit recombinant monoclonal antibody in PBS only (BSA and azide free) storage buffer at a concentration of 1 mg/mL, ready for conjugation. Created using Proteintech's proprietary in-house recombinant technology. Recombinant production enables unrivalled batch-to-batch consistency, easy scale-up, and future security of supply.

This conjugation ready format makes antibodies ideal for use in many applications including: ELISAs, multiplex assays requiring matched pairs, mass cytometry, and multiplex imaging applications. Antibody use should be optimized by the end user for each application and assay.

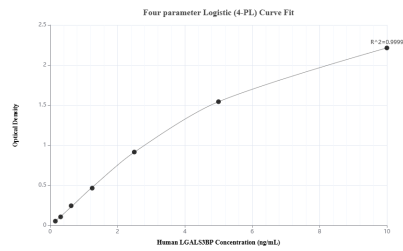
Storage

Storage:
Store at -80°C.
Storage Buffer:
PBS only, pH7.3

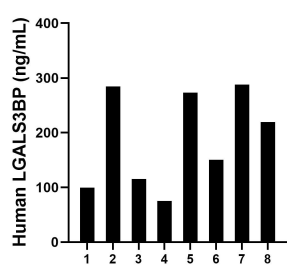
For technical support and original validation data for this product please contact:
T: 1 (888) 4PTGLAB (1-888-478-4522) (toll free in USA), or 1(312) 455-8498 (outside USA)
E: proteintech@ptglab.com
W: ptglab.com

This product is exclusively available under Proteintech Group brand and is not available to purchase from any other manufacturer.

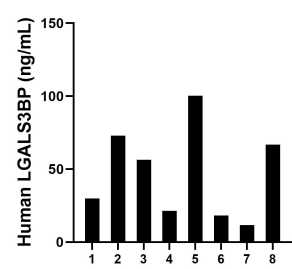
Selected Validation Data



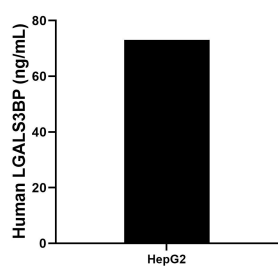
Sandwich ELISA standard curve of MP02172-3, HumanLGALS3BP Recombinant Matched Antibody Pair - PBS only. 85883-7-PBS was coated to a plate as the capture antibody and incubated with serial dilutions of standard Eg3302. 85883-6-PBS was HRP conjugated as the detection antibody. Range: 0.156-10 ng/mL



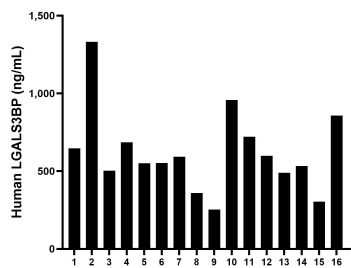
Saliva of eight individual healthy human donors was measured. The human LGALS3BP concentration of detected samples was determined to be 188.02 ng/mL with a range of 74.95 - 287.71 ng/mL



Urine of eight individual healthy human donors was measured. The human LGALS3BP concentration of detected samples was determined to be 47.18 ng/mL with a range of 11.64 - 100.32 ng/mL



HepG2 (human hepatocellular carcinoma cells) were cultured in DMEM supplemented with 10% fetal bovine serum, 2.5 mM L-glutamine, 100 U/mL penicillin, and 100 µg/mL streptomycin sulfate. An aliquot of the cell culture supernatants was removed, assayed for human LGALS3BP, and measured 73.08 ng/mL



Serum of sixteen individual healthy human donors was measured. The human LGALS3BP concentration of detected samples was determined to be 620.97 ng/mL with a range of 252.78 - 1,331.49 ng/mL