

For Research Use Only

# LGALS3BP Recombinant antibody, PBS Only (Capture)

Catalog Number: 85883-7-PBS



## Basic Information

<b>Catalog Number:</b> 85883-7-PBS	<b>GenBank Accession Number:</b> NM_005567	<b>Purification Method:</b> Protein A purification
<b>Size:</b> 100ug , Concentration: 1 mg/ml by Nanodrop;	<b>GeneID (NCBI):</b> 3959	<b>CloneNo.:</b> 250138C12
<b>Source:</b> Rabbit	<b>UNIPROT ID:</b> Q08380	
<b>Isotype:</b> IgG	<b>Full Name:</b> lectin, galactoside-binding, soluble, 3 binding protein	
<b>Immunogen Catalog Number:</b> EG3302	<b>Calculated MW:</b> 585 aa, 65 kDa	

## Applications

**Tested Applications:**  
Sandwich ELISA, Indirect ELISA, Sample test

**Species Specificity:**  
human

## Product Information

85883-7-PBS targets LGALS3BP as part of a matched antibody pair:

MP02172-3: 85883-7-PBS capture and 85883-6-PBS detection (validated in Sandwich ELISA)

Unconjugated rabbit recombinant monoclonal antibody in PBS only (BSA and azide free) storage buffer at a concentration of 1 mg/mL, ready for conjugation. Created using Proteintech's proprietary in-house recombinant technology. Recombinant production enables unrivalled batch-to-batch consistency, easy scale-up, and future security of supply.

This conjugation ready format makes antibodies ideal for use in many applications including: ELISAs, multiplex assays requiring matched pairs, mass cytometry, and multiplex imaging applications. Antibody use should be optimized by the end user for each application and assay.

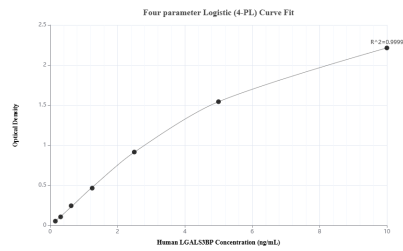
## Storage

**Storage:**  
Store at -80°C.  
**Storage Buffer:**  
PBS only, pH7.3

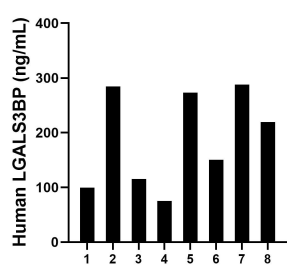
For technical support and original validation data for this product please contact:  
T: 1 (888) 4PTGLAB (1-888-478-4522) (toll free in USA), or 1(312) 455-8498 (outside USA)  
E: proteintech@ptglab.com  
W: ptglab.com

This product is exclusively available under Proteintech Group brand and is not available to purchase from any other manufacturer.

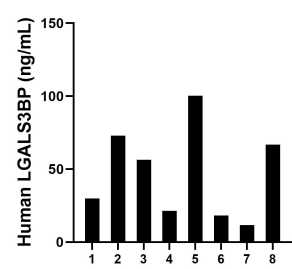
Selected Validation Data



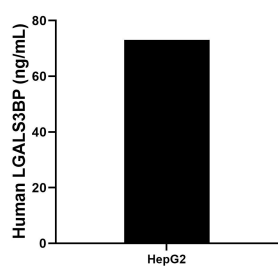
Sandwich ELISA standard curve of MP02172-3, HumanLGALS3BP Recombinant Matched Antibody Pair - PBS only. 85883-7-PBS was coated to a plate as the capture antibody and incubated with serial dilutions of standard Eg3302. 85883-6-PBS was HRP conjugated as the detection antibody. Range: 0.156-10 ng/mL



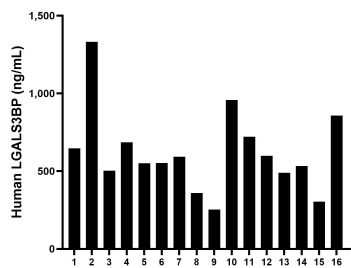
Saliva of eight individual healthy human donors was measured. The human LGALS3BP concentration of detected samples was determined to be 188.02 ng/mL with a range of 74.95 - 287.71 ng/mL



Urine of eight individual healthy human donors was measured. The human LGALS3BP concentration of detected samples was determined to be 47.18 ng/mL with a range of 11.64 - 100.32 ng/mL



HepG2 (human hepatocellular carcinoma cells) were cultured in DMEM supplemented with 10% fetal bovine serum, 2.5 mM L-glutamine, 100 U/mL penicillin, and 100 µg/mL streptomycin sulfate. An aliquot of the cell culture supernatants was removed, assayed for human LGALS3BP, and measured 73.08 ng/mL



Serum of sixteen individual healthy human donors was measured. The human LGALS3BP concentration of detected samples was determined to be 620.97 ng/mL with a range of 252.78 - 1,331.49 ng/mL