

For Research Use Only

RBBP6 Recombinant antibody, PBS Only (Detector)

Catalog Number: 85884-1-PBS



Basic Information

Catalog Number: 85884-1-PBS	GenBank Accession Number: BC029352	Purification Method: Protein A purification
Size: 100ug, Concentration: 1 mg/ml by Nanodrop;	GeneID (NCBI): 5930	CloneNo.: 250142B11
Source: Rabbit	UNIPROT ID: Q7Z6E9	
Isotype: IgG	Full Name: retinoblastoma binding protein 6	
Immunogen Catalog Number: AG2484	Calculated MW: 1792 aa, 200 kDa	

Applications

Tested Applications:
Cytometric bead array, Sandwich ELISA, Indirect ELISA, Sample test

Species Specificity:
human

Product Information

85884-1-PBS targets RBBP6 as part of a matched antibody pair:

MP02182-2: 85884-2-PBS capture and 85884-1-PBS detection (validated in Cytometric bead array, Sandwich ELISA)

Unconjugated rabbit recombinant monoclonal antibody in PBS only (BSA and azide free) storage buffer at a concentration of 1 mg/mL, ready for conjugation. Created using Proteintech's proprietary in-house recombinant technology. Recombinant production enables unrivalled batch-to-batch consistency, easy scale-up, and future security of supply.

This conjugation ready format makes antibodies ideal for use in many applications including: ELISAs, multiplex assays requiring matched pairs, mass cytometry, and multiplex imaging applications. Antibody use should be optimized by the end user for each application and assay.

Storage

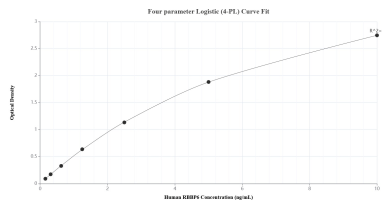
Storage:
Store at -80°C.

Storage Buffer:
PBS only, pH7.3

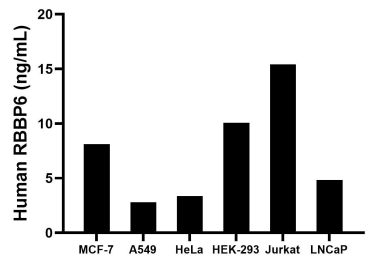
For technical support and original validation data for this product please contact:
T: 1 (888) 4PTGLAB (1-888-478-4522) (toll free in USA), or 1(312) 455-8498 (outside USA)
E: proteintech@ptglab.com
W: ptglab.com

This product is exclusively available under Proteintech Group brand and is not available to purchase from any other manufacturer.

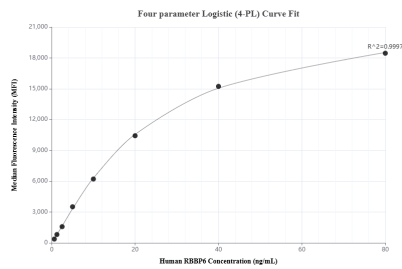
Selected Validation Data



Sandwich ELISA standard curve of MP02182-2, Human RBBP6 Recombinant Matched Antibody Pair - PBS only. 85884-2-PBS was coated to a plate as the capture antibody and incubated with serial dilutions of standard Ag2484. 85884-1-PBS was HRP conjugated as the detection antibody. Range: 0.156-10 ng/mL



The mean RBBP6 concentration was determined to be 8.11 ng/mL in MCF-7 cell extract based on a 2.40 mg/mL extract load, 2.79 ng/mL in A549 cell extract based on a 2.40 mg/mL extract load, 3.36 ng/mL in HeLa cell extract based on a 0.90 mg/mL extract load, 10.06 ng/mL in HEK-293 cell extract based on a 2.90 mg/mL extract load, 15.41 ng/mL in Jurkat cell extract based on a 2.20 mg/mL extract load and 4.84 ng/mL in LNCaP cell extract based on a 1.20 mg/mL extract



Cytometric bead array standard curve of MP02182-2, RBBP6 Recombinant Matched Antibody Pair, PBS Only. Capture antibody: 85884-2-PBS. Detection antibody: 85884-1-PBS. Standard: Ag2484. Range: 0.625-80 ng/mL