

For Research Use Only

TAF1B Recombinant antibody

Catalog Number: 85885-4-RR



Basic Information

Catalog Number:

85885-4-RR

Size:

100ul , Concentration: 1000 µg/ml by Nanodrop;

Source:

Rabbit

Isotype:

IgG

Immunogen Catalog Number:

AG38211

GenBank Accession Number:

BC018137

GeneID (NCBI):

9014

UNIPROT ID:

Q53T94

Full Name:

TATA box binding protein (TBP)-associated factor, RNA polymerase I, B, 63kDa

Calculated MW:

588 aa, 69 kDa

Observed MW:

69 kDa

Purification Method:

Protein A purification

CloneNo.:

250162H2

Recommended Dilutions:

WB: 1:1000-1:6000

Applications

Tested Applications:

WB, ELISA

Species Specificity:

human

Positive Controls:

WB : HeLa cells, HEK-293 cells, L02 cells

Background Information

TAF1B is a component of the RNA polymerase I core factor complex that acts as a GTF2B/TFIIB-like factor and plays a key role in multiple steps during transcription initiation such as pre-initiation complex (PIC) assembly and postpolymerase recruitment events in polymerase I (Pol I) transcription. It binds to rDNA promoters and plays a role in Pol I recruitment as a component of the SL1/TIF-IB complex, and possibly directly through its interaction with RRN3 (PMID: 11250903; 11283244; 15970593; 21921199).

Storage

Storage:

Store at -20°C. Stable for one year after shipment.

Storage Buffer:

PBS with 0.02% sodium azide and 50% glycerol, pH7.3

Aliquoting is unnecessary for -20°C storage

*** 20ul sizes contain 0.1% BSA

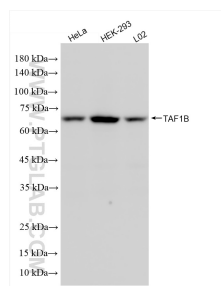
For technical support and original validation data for this product please contact:

T: 1 (888) 4PTGLAB (1-888-478-4522) (toll free in USA), or 1(312) 455-8498 (outside USA)

E: proteintech@ptglab.com
W: ptglab.com

This product is exclusively available under Proteintech Group brand and is not available to purchase from any other manufacturer.

Selected Validation Data



HeLa cells were subjected to SDS PAGE followed by western blot with 85885-4-RR (TAF1B antibody) at dilution of 1:3000 incubated at room temperature for 1.5 hours.