

For Research Use Only

MYCBP Recombinant antibody

Catalog Number: 85891-1-RR



Basic Information

Catalog Number:

85891-1-RR

Size:

100ul , Concentration: 1000 µg/ml by
Nanodrop;

Source:

Rabbit

Isotype:

IgG

Immunogen Catalog Number:

AG2651

GenBank Accession Number:

BC008686

GeneID (NCBI):

26292

UNIPROT ID:

Q99417

Full Name:

c-myc binding protein

Calculated MW:

103 aa, 12 kDa

Observed MW:

12 kDa

Purification Method:

Protein A purification

CloneNo.:

250129G1

Recommended Dilutions:

WB 1:500-1:2000

Applications

Tested Applications:

WB, ELISA

Species Specificity:

human

Positive Controls:

WB : HeLa cells, A549 cells, HEK-293 cells, Jurkat cells

Background Information

MYC binding protein(MYCBP), encoded by MYCBP gene, binds to N-terminal region of MYC, and then MYC can activate E box-dependent transcription. Upon increasing expression of MYC, MYCBP translocates into the nucleus in the S phase of the cell cycle. MYCBP may involve in spermatogenesis, since it's found to be interacted with AKAP84/149 in the mitochondria in somatic cells and sperm. It highly expressed in heart, placenta, pancreas, skeletal muscle and kidney, but low in lung. This is a rabbit polyclonal antibody raised against full-length MYCBP of human origin.

Storage

Storage:

Store at -20°C. Stable for one year after shipment.

Storage Buffer:

PBS with 0.02% sodium azide and 50% glycerol, pH7.3

Aliquoting is unnecessary for -20°C storage

*** 20ul sizes contain 0.1% BSA

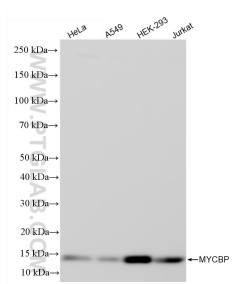
For technical support and original validation data for this product please contact:

T: 1 (888) 4PTGLAB (1-888-478-4522) (toll free
in USA), or 1(312) 455-8498 (outside USA)

E: proteintech@ptglab.com
W: ptglab.com

This product is exclusively available under Proteintech Group brand and is not available to purchase from any other manufacturer.

Selected Validation Data



Various lysates were subjected to SDS PAGE followed by western blot with 85891-1-RR (MYCBP antibody) at dilution of 1:1000 incubated at room temperature for 1.5 hours.