

For Research Use Only

KLHL2 Recombinant antibody

Catalog Number: 85893-1-RR



Basic Information

Catalog Number: 85893-1-RR	GenBank Accession Number: BC022503	Purification Method: Protein A purification
Size: 100ul , Concentration: 1000 µg/ml by Nanodrop;	GeneID (NCBI): 11275	CloneNo.: 250148G5
Source: Rabbit	UNIPROT ID: O95198	Recommended Dilutions: WB: 1:5000-1:50000 IF/ICC: 1:200-1:800
Isotype: IgG	Full Name: kelch-like 2, Mayven (Drosophila)	
Immunogen Catalog Number: AG5950	Calculated MW: 66 kDa	
	Observed MW: 66 kDa	

Applications

Tested Applications: WB, IF/ICC, ELISA	Positive Controls:
Species Specificity: human	WB : HEK-293T cells, A431 cells, MCF-7 cells, K-562 cells IF/ICC : MCF-7 cells,

Background Information

KLHL2 contains an SH3-binding domain in the N terminus and a POZ domain and 6 tandem repeats of approximately 50 amino acids each in the C terminus. In astrocytoma/glioblastoma cells, KLHL2 colocalized with actin filaments in the cytoskeleton remodeling regions in stress fibers and in patchy cortical actin-rich regions of the cell margins. In primary rat hippocampal neurons, it was highly expressed in the cell body and in neurite processes (PMID: 10397770).

Storage

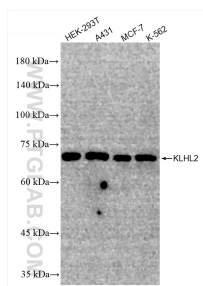
Storage:
Store at -20°C. Stable for one year after shipment.
Storage Buffer:
PBS with 0.02% sodium azide and 50% glycerol, pH7.3
Aliquoting is unnecessary for -20°C storage

*** 20ul sizes contain 0.1% BSA

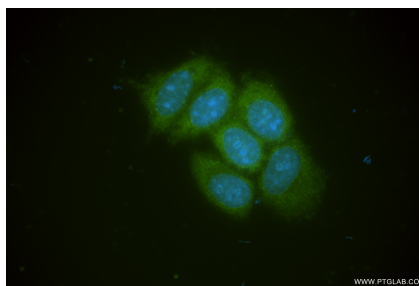
For technical support and original validation data for this product please contact:
T: 1 (888) 4PTGLAB (1-888-478-4522) (toll free in USA), or 1(312) 455-8498 (outside USA)
E: proteintech@ptglab.com
W: ptglab.com

This product is exclusively available under Proteintech Group brand and is not available to purchase from any other manufacturer.

Selected Validation Data



Various lysates were subjected to SDS PAGE followed by western blot with 85893-1-RR (KLHL2 antibody) at dilution of 1:20000 incubated at room temperature for 1.5 hours.



Immunofluorescent analysis of (-20°C Ethanol) fixed MCF-7 cells using KLHL2 antibody (85893-1-RR, Clone: 250148G5) at dilution of 1:400 and CoraLite®488-Conjugated Goat Anti-Rabbit IgG(H+L) (SA00013-2).