

For Research Use Only

PTPN1 Recombinant antibody, PBS Only (Capture)

Catalog Number: 85905-1-PBS



Basic Information

Catalog Number: 85905-1-PBS	GenBank Accession Number: BC015660	Purification Method: Protein A purification
Size: 100ug , Concentration: 1 mg/ml by Nanodrop;	GeneID (NCBI): 5770	CloneNo.: 250215H4
Source: Rabbit	UNIPROT ID: P18031	
Isotype: IgG	Full Name: protein tyrosine phosphatase, non-receptor type 1	
Immunogen Catalog Number: AG1878	Calculated MW: 435 aa, 50 kDa	

Applications

Tested Applications:
Cytometric bead array, Sandwich ELISA, Indirect ELISA, Sample test

Species Specificity:
human

Product Information

85905-1-PBS targets PTPN1 as part of a matched antibody pair:

MP02199-1: 85905-1-PBS capture and 85905-2-PBS detection (validated in Cytometric bead array)

MP02199-2: 85905-1-PBS capture and 85905-6-PBS detection (validated in Sandwich ELISA)

Unconjugated rabbit recombinant monoclonal antibody in PBS only (BSA and azide free) storage buffer at a concentration of 1 mg/mL, ready for conjugation. Created using Proteintech's proprietary in-house recombinant technology. Recombinant production enables unrivalled batch-to-batch consistency, easy scale-up, and future security of supply.

This conjugation ready format makes antibodies ideal for use in many applications including: ELISAs, multiplex assays requiring matched pairs, mass cytometry, and multiplex imaging applications. Antibody use should be optimized by the end user for each application and assay.

Storage

Storage:
Store at -80°C.
Storage Buffer:
PBS only, pH7.3

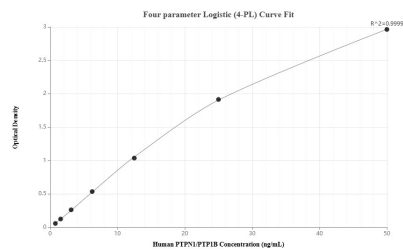
For technical support and original validation data for this product please contact:

T: 1 (888) 4PTGLAB (1-888-478-4522) (toll free in USA), or 1(312) 455-8498 (outside USA)

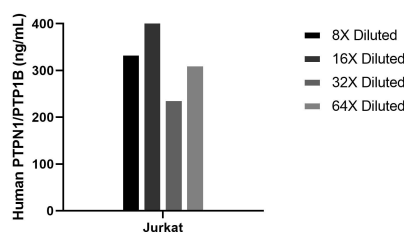
E: proteintech@ptglab.com
W: ptglab.com

This product is exclusively available under Proteintech Group brand and is not available to purchase from any other manufacturer.

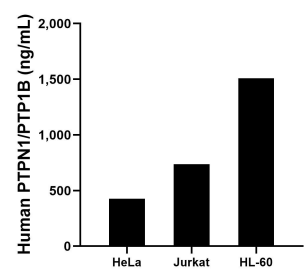
Selected Validation Data



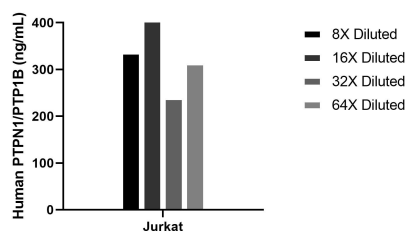
Sandwich ELISA standard curve of MP02199-2, Human PTPN1/PTP1B Recombinant Matched Antibody Pair - PBS only. 85905-1-PBS was coated to a plate as the capture antibody and incubated with serial dilutions of standard Ag1878. 85905-6-PBS was HRP conjugated as the detection antibody. Range: 0.781-50 ng/mL



The mean PTPN1/PTP1B concentration was determined to be 330.3 ng/mL in Jurkat cell extract based on a 1.9 mg/mL extract load.



The mean PTPN1/PTP1B concentration was determined to be 426.37 ng/mL in HeLa cell extract based on a 1.3 mg/mL extract load, 738.76 ng/mL in Jurkat cell extract based on a 1.9 mg/mL extract load and 1,509.33 ng/mL in HL-60 cell extract based on a 1.5 mg/mL extract load.



Cytometric bead array standard curve of MP02199-1, PTPN1/PTP1B Recombinant Matched Antibody Pair, PBS Only. Capture antibody: 85905-1-PBS. Detection antibody: 85905-2-PBS. Standard: Ag1878. Range: 0.781-100 ng/mL